



# Aesthetic Fire Sprinklers Blend in beautifully



The power behind **your mission**

---







## Design uncompromised.

---

You have a specific vision for your building. Our sprinklers won't disrupt it. RAVEN Studio and Flat-Plate Concealed sprinklers are available in a variety of colors and conceal flush against a ceiling or wall, blending in unobtrusively no matter the situation. The UL Listed Window Sprinklers are ideal as an alternative to fire-rated glass, protecting your budget and design. The most elegant solution is one you don't have to think about.

---

# Product Portfolio

## Window Sprinkler



### Benefits:

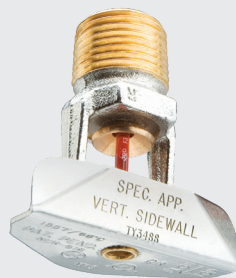
- The only UL Listed automatic sprinkler that is designed to protect window glazing
- Provides an alternative to the use of "fire-rated" glass
- Deflector design that wets the entire window combined with a fast response operating element
- Concealed model blends with the ceiling and the cover plate is available in a variety of colors and finishes
- Applicable in many building types, including healthcare, academic, commercial, high-rise, multi-family residential

### Window sprinkler types:



#### Flat-Plate Concealed

Flat-plate concealed vertical sidewall Sprinkler is housed above the ceiling and uses vertical sprinkler piping with side deflecting sprinkler head



#### Vertical Sidewall

Uses vertical sprinkler piping with side deflecting sprinkler head



#### Horizontal Sidewall

Requires exposed piping with elbow to direct water towards glass

## RAVEN Studio

---



### Benefits:

- Aesthetically appealing flush design
- Conceals deflector and other operating parts behind the link assembly
- Wide range of custom colors available
- Unique UL Listed paint-in-place escutcheon
- Quick response sprinkler
- Protected design helps minimize accidental activations
- Tamper resistant

## Flat-Plate Concealed

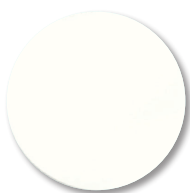
---



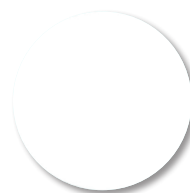
### Benefits:

- Available in multiple K-Factors and orientations
  - Ideal for architecturally sensitive areas
  - Easily blends with wall surface for clean look
  - Helps prevent damage and interruption from accidental activations caused by objects being hung from or striking sprinkler
  - Available in a variety of standard or custom colors
  - Cover Plate/Retainer Assembly conceals sprinkler operating components above the ceiling or wall
  - Quick response with the RFIII horizontal sidewall sprinkler
  - Long throw up to 24 feet of extended coverage from the RFIII horizontal sidewall
  - Fast-response, fusible solder sprinklers from RFII pendent
-

## Available Cover Plate Finishes



**Pure White**  
(RAL 9010)



**Signal White**  
(RAL 9003)



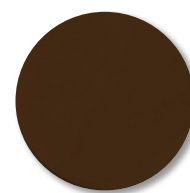
**Grey White**  
(RAL 9002)



**Light Ivory**  
(RAL 1015)



**Beige**  
(RAL 1001)



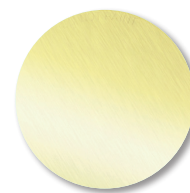
**Terra Brown**  
(RAL 8028)



**Jet Black**  
(RAL 9005)



**Brushed  
Chrome**



**Brushed  
Brass**



Custom Colors Available

Learn more at <http://www.tyco-fire.com/custompaint>

---

# Which concealed sprinkler fits your needs?

|                              | RFII  | Eloc / Illusion   | Raven Studio  | RFIII   |
|------------------------------|---|---|---|---|
| <b>Orientation</b>           | Pendent   | Pendent   | Horizontal sidewall and Pendent   | Horizontal sidewall   |
| <b>Paint-in-Place</b>        | No - manufacturer painted only  | No - manufacturer painted only  | Yes - escutcheon only   | No - manufacturer painted only  |
| <b>Custom Colors</b>         | Yes   | Yes   | Yes - escutcheon and sprinkler  | Yes   |
| <b>Standard Colors</b>       | Ivory, Beige, Pure White, Signal White, Grey White, Brown, Black, Brushed Brass, Brushed Chrome, custom paint | Ivory, Beige, Pure White, Signal White, Grey White, Brown, Black, Brushed Brass, Brushed Chrome, custom paint | <b>Sprinkler:</b> White, Grey, custom paint<br><b>Escutcheon:</b> White, Grey, Chrome/ Electropolish, Primed White, Primed Grey, custom paint | Ivory, Beige, Pure White, Signal White, Grey White, Brown, Black, Brushed Brass, Brushed Chrome, custom paint |
| <b>Response</b>              | Quick   | Quick   | Quick   | Quick   |
| <b>Coverage Type</b>         | Extended, Standard  | Extended, Standard  | Standard, Extended  | Extended  |
| <b>K-Factor</b>              | 5.6   | 11.2  | 5.6   | 8.0   |
| <b>Coverage Area</b>         | Up to 20 ft x 20 ft (6,1 m x 6,1 m)   | Up to 20 ft x 20 ft (6,1 m x 6,1 m)   | Up to 16 ft x 16 ft (4,9 m x 4,9 m)   | Up to 16 ft x 24 ft (4,9 m x 7,3 m) and 18 ft x 22 ft (5,9 m x 6,7 m)   |
| <b>Hazard Classification</b> | Light, Ordinary   | Light, Ordinary   | Light   | Light   |
| <b>Tamper Resistance</b>     | Concealed sprinkler reduces chance of accidental activation   | Concealed sprinkler reduces chance of accidental activation   | Tamper resistant flush sprinkler reduces chance of accidental activation; captive escutcheon option for enhanced security                     | Concealed sprinkler reduces chance of accidental activation   |
| <b>Approvals</b>             | UL, C-UL, NYC, (LPCB, FM - Standard only)   | UL, C-UL, (NYC - ELOC only)   | UL, C-UL  | UL, C-UL  |
| <b>Tech Data Sheet</b>       | TFP260, TFP181  | TFP250, TFP184  | TFP658  | TFP270  |

---

## About Johnson Controls Building Technologies and Solutions

At Johnson Controls, we transform the environments where people live, work, learn and play. From optimizing building performance to improving safety and enhancing comfort, we drive the outcomes that matter most. We deliver our promise in industries such as healthcare, education, data centers and manufacturing. With a global team of 105,000 experts in more than 150 countries and over 130 years of innovation, we are the power behind our customers' mission. Our leading portfolio of building technology and solutions includes some of the most trusted names in the industry, such as Tyco®, York®, Metasys®, Ruskin®, Titus®, Frick®, Penn®, Sabroe®, Simplex®, Ansul® and Grinnell®

For more information, contact your regional Johnson Controls product representative or visit [www.tyco-fire.com](http://www.tyco-fire.com).

### North America

1400 Pennbrook Parkway,  
Lansdale, PA, 19446, USA  
Tel: +1 215-362-0700  
Tel: +1 800-558-5236

### Europe

Kopersteden 1  
Enschede, Overijssel 7547 TJ  
The Netherlands  
Tel: +31 (0) 53 428 4444

### Middle East

Internet City, Office Park Building,  
Block D, Floor 3  
Dubai, United Arab Emirates  
Tel: +971 4455 0700

### Asia Pacific

2 Serangoon North Avenue 5  
#07-01  
Singapore 554911  
Tel: +65 6577 4360

The power behind **your mission**

