



# Aesthetic Fire Sprinklers Blend in beautifully



The power behind **your mission**







## Design uncompromised.

---

You have a specific vision for your building. Our sprinklers won't disrupt it. RAVEN Studio and Flat-Plate Concealed sprinklers are available in a variety of colors and conceal flush against a ceiling or wall, blending in unobtrusively no matter the situation. The UL Listed Window Sprinklers are ideal as an alternative to fire-rated glass, protecting your budget and design. The most elegant solution is one you don't have to think about.

---

# Product Portfolio

## Window Sprinkler



### Benefits:

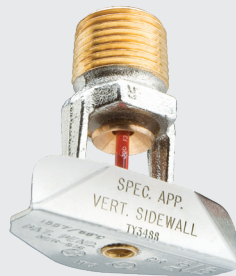
- The only UL Listed automatic sprinkler that is designed to protect window glazing
- Provides an alternative to the use of “fire-rated” glass
- Deflector design that wets the entire window combined with a fast response operating element
- Concealed model blends with the ceiling and the cover plate is available in a variety of colors and finishes
- Applicable in many building types, including healthcare, academic, commercial, high-rise, multi-family residential

## Window sprinkler types:



### Flat-Plate Concealed

Flat-plate concealed vertical sidewall Sprinkler is housed above the ceiling and uses vertical sprinkler piping with side deflecting sprinkler head



### Vertical Sidewall

Uses vertical sprinkler piping with side deflecting sprinkler head

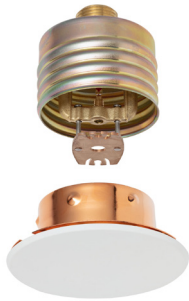


### Horizontal Sidewall

Requires exposed piping with elbow to direct water towards glass

## Concealed Corridor

---



### Benefits:

- Flat-plate design conceals the sprinkler above the ceiling
- Maximum coverage area of 28 ft by 10 ft (8,5 m x 3,1 m)
- UL Listed, specifically designed for use in long, narrow, commercial light hazard spaces
- Quick response sprinkler
- Intended to be used in automatic sprinkler system designed in accordance with NFPA 13
- Available in variety of standard and custom colors

## RAVEN Studio

---



### Benefits:

- Aesthetically appealing flush design
- Conceals deflector and other operating parts behind the link assembly
- Wide range of custom colors available
- Unique UL Listed paint-in-place escutcheon
- Quick response sprinkler
- Protected design helps minimize accidental activations
- Tamper resistant

## Flat-Plate Concealed

---



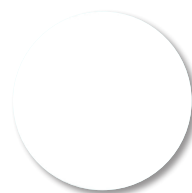
### Benefits:

- Available in multiple K-Factors and orientations
  - Ideal for architecturally sensitive areas
  - Helps prevent damage and interruption from accidental activations caused by objects being hung from or striking sprinkler
  - Available in a variety of standard or custom colors
  - Cover Plate/Retainer Assembly conceals sprinkler operating components above the ceiling or wall
  - Quick response with the RFIII horizontal sidewall sprinkler
  - Long throw up to 24 feet of extended coverage from the RFIII horizontal sidewall
  - Fast-response, fusible solder sprinklers from RFII pendent
-

## Available Cover Plate Finishes



**Pure White**  
(RAL 9010)



**Signal White**  
(RAL 9003)



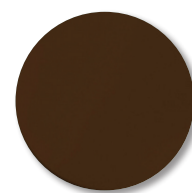
**Grey White**  
(RAL 9002)



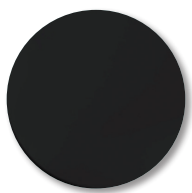
**Light Ivory**  
(RAL 1015)



**Beige**  
(RAL 1001)



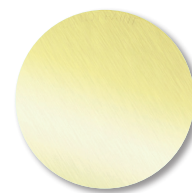
**Terra Brown**  
(RAL 8028)



**Jet Black**  
(RAL 9005)



**Brushed  
Chrome**



**Brushed  
Brass**



Custom Colors Available

Learn more at <http://www.tyco-fire.com/custompaint>

**Note:** All plate colors shown here are standard for LFII and RFII products. The following colors are custom for ELOC and Illusion products: Ivory, Terra Brown or Beige.

# Which concealed sprinkler fits your needs?

	Model CWS	RFII	RFII-C	RFIII	Eloc / Illusion	Raven Studio
<b>Orientation</b>	Pendent Vertical Sidewall	Pendent	Pendent	Horizontal sidewall	Pendent	Horizontal sidewall and Pendent
<b>Paint-in-Place</b>	No - manufacturer painted only	No - manufacturer painted only	No - manufacturer painted only	No - manufacturer painted only	No - manufacturer painted only	Yes - escutcheon only
<b>Custom Colors</b>	Yes	Yes	Yes	Yes	Yes	Yes - escutcheon and sprinkler
<b>Standard Colors</b>	Ivory, Beige, Pure White, Signal White, Grey White, Brown, Black, Brushed Brass, Bright Chrome, Brushed Chrome, custom paint	Ivory, Beige, Pure White, Signal White, Grey White, Brown, Black, Brushed Brass, Brushed Chrome, custom paint	Ivory, Beige, Pure White, Signal White, Grey White, Brown, Black, Brushed Brass, Brushed Chrome, custom paint	Ivory, Beige, Pure White, Signal White, Grey White, Brown, Black, Brushed Brass, Brushed Chrome, custom paint	Ivory, Beige, Pure White, Signal White, Grey White, Brown, Black, Brushed Brass, Brushed Chrome, custom paint	<b>Sprinkler:</b> White, Grey, custom paint <b>Escutcheon:</b> White, Grey, Chrome/Electropolish, Primed White, Primed Grey, custom paint
<b>Response</b>	Fast	Quick	Quick	Quick	Quick	Quick
<b>Coverage Type</b>	Specific Application	Extended, Standard	Extended	Extended	Extended, Standard	Extended, Standard
<b>K-Factor</b>	5.6	5.6	5.6	8.0	11.2	5.6
<b>Coverage Area</b>	One per window, up to 8 ft wide	Up to 20 ft x 20 ft (6,1 m x 6,1 m)	Up to 28 ft by 10 ft (8,5 m x 3,1 m)	Up to 16 ft x 24 ft (4,9 m x 7,3 m) and 18 ft x 22 ft (5,9 m x 6,7 m)	Up to 20 ft x 20 ft (6,1 m x 6,1 m)	Up to 16 ft x 16 ft (4,9 m x 4,9 m)
<b>Hazard Classification</b>	Light, Ordinary	Light, Ordinary	Light	Light	Light, Ordinary	Light
<b>Tamper Resistance</b>	Concealed sprinkler reduces chance of accidental activation	Concealed sprinkler reduces chance of accidental activation	Concealed sprinkler reduces chance of accidental activation	Concealed sprinkler reduces chance of accidental activation	Concealed sprinkler reduces chance of accidental activation	Tamper resistant flush sprinkler reduces chance of accidental activation; captive escutcheon option for enhanced security
<b>Approvals</b>	UL, C-UL	UL, C-UL, NYC, (LPCB, FM - Standard only)	UL	UL, C-UL	UL, C-UL, W(NYC - ELOC only)	UL, C-UL
<b>Tech Data Sheet</b>	TFP621	TFP260, TFP181	TFP263	TFP270	TFP250, TFP184	TFP658



---

## About Johnson Controls Building Technologies and Solutions

At Johnson Controls, we transform the environments where people live, work, learn and play. From optimizing building performance to improving safety and enhancing comfort, we drive the outcomes that matter most. We deliver our promise in industries such as healthcare, education, data centers and manufacturing. With a global team of 105,000 experts in more than 150 countries and over 130 years of innovation, we are the power behind our customers' mission. Our leading portfolio of building technology and solutions includes some of the most trusted names in the industry, such as Tyco®, York®, Metasys®, Ruskin®, Titus®, Frick®, Penn®, Sabroe®, Simplex®, Ansul® and Grinnell®

For more information, contact your regional Johnson Controls product representative or visit [www.tyco-fire.com](http://www.tyco-fire.com).

### North America

1400 Pennbrook Parkway,  
Lansdale, PA, 19446, USA  
Tel: +1 215-362-0700  
Tel: +1 800-558-5236

### Europe

Kopersteden 1  
Enschede, Overijssel 7547 TJ  
The Netherlands  
Tel: +31 (0) 53 428 4444

### Middle East

Internet City, Office Park Building,  
Block D, Floor 3  
Dubai, United Arab Emirates  
Tel: +971 4455 0700

### Asia Pacific

2 Serangoon North Avenue 5  
#07-01  
Singapore 554911  
Tel: +65 6577 4360

The power behind **your mission**

