

G-FIRE One-Bolt Coupling

Figure 579



Features & Benefits

- One-bolt design means no alternate tightening required
- Pre-assembled for fast and easy push-on installation
- Center-stop gasket ensures proper positioning on pipe
- Low-profile spine allows installation of couplings in tighter spaces
- 360-degree pipe contact ensures a truly rigid joint

The G-FIRE One-Bolt Figure 579 is a grooved rigid coupling designed to make joining pipe faster and easier than ever before.

At-A-Glance

Arriving pre-assembled and pre-lubricated, the G-FIRE Figure 579 Coupling is ready to install right out of the box. This innovative coupling has a unique design consisting of a three-piece housing, a center-stop gasket, and just one bolt to tighten. The center-stop gasket ensures proper positioning on the pipe and enables easy push on installation in both horizontal and vertical applications across wet, dry and freezer systems. The coupling's unique, one-bolt design eliminates alternate tightening for a faster, more efficient installation.



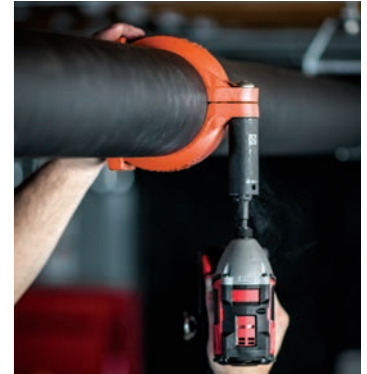
A full range of metric and imperial sizes are available.



G-FIRE One-Bolt Coupling

Figure 579 / Technical Data

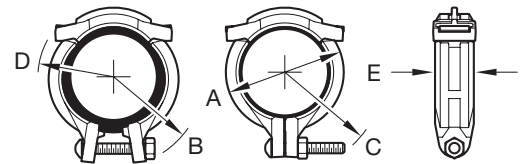
Maximum Working Pressure	Up to 365 psi (25,2 bar)
Approvals	UL and ULC Listed, FM Approved, VdS Approved, LPCB Approved
Finish	Available in painted (red or orange) or galvanized
Gasket	Center-Stop, Push-On Pre-Lubricated, Grade "A" EPDM
Bolt / Nut	Carbon Steel with Zinc electroplating



Pipe Size		Max. ^b Pressures psi (bar)	Max. ^b End Load Lbs. (kN)	Max. ^{a, c} End Gap Inches (mm)	Nominal Dimensions						Coupling Bolts		Approx. Weight Lbs. (kg)
Nominal ANSI Inches DN	O.D. Inches (mm)				A (Open) Inches (mm)	A (Closed) Inches (mm)	B (Radius) Inches (mm)	C (Radius) Inches (mm)	D (Radius) Inches (mm)	E Inches (mm)	Qty.	Size Inches (mm)	
1 1/4 32	1.660 (42,4)	365 (25,2)	790 (3,51)	0.32 (8,1)	3.05 (77,5)	2.81 (71,4)	2.53 (64,3)	2.88 (73,2)	2.06 (52,3)	2.05 (51,9)	1	3/8 x 2 1/2 (M10 x 64)	1.7 (0,8)
1 1/2 40	1.900 (48,3)	365 (25,2)	1035 (4,60)	0.32 (8,1)	3.36 (85,3)	3.08 (78,2)	2.70 (68,6)	2.98 (75,7)	2.19 (55,6)	2.05 (51,9)	1	3/8 x 2 1/2 (M10 x 64)	1.8 (0,8)
2 50	2.375 (60,3)	365 (25,2)	1617 (7,19)	0.32 (8,1)	3.92 (99,6)	3.41 (86,5)	2.94 (74,7)	3.36 (85,2)	2.40 (60,8)	2.05 (51,9)	1	3/8 x 2 3/4 (M10 x 70)	1.9 (0,9)
2 1/2 65	2.875 (73,0)	365 (25,2)	2370 (10,54)	0.32 (8,1)	4.48 (113,8)	3.97 (100,7)	3.19 (81,1)	3.54 (90,0)	2.64 (67,2)	2.05 (51,9)	1	3/8 x 2 3/4 (M10 x 70)	2.1 (1,0)
76,1 65	3.000 (76,1)	350 (24,1)	2474 (11,00)	0.32 (8,1)	4.53 (115,1)	4.09 (103,9)	3.24 (82,2)	3.59 (91,2)	2.69 (68,3)	2.05 (51,9)	1	3/8 x 2 3/4 (M10 x 70)	2.2 (1,0)
3 80	3.500 (88,9)	365 (25,2)	3512 (15,62)	0.32 (8,1)	5.10 (129,5)	4.57 (116,0)	3.45 (87,7)	3.79 (96,2)	3.18 (80,7)	2.05 (51,9)	1	3/8 x 2 3/4 (M10 x 70)	2.8 (1,3)
4 100	4.500 (114,3)	365 (25,2)	5805 (25,82)	0.32 (8,1)	6.20 (157,5)	5.67 (143,9)	4.32 (109,7)	4.71 (119,6)	3.70 (93,9)	2.05 (51,9)	1	1/2 x 3 1/2 (M12 x 89)	4.0 (1,8)

Note:

- a. Maximum available gap between pipe ends. Minimum gap = 0.12" / 3,05mm
- b. Maximum Pressure and End Load are total from all loads based on standard weight steel pipe. Pressure ratings and end loads may differ for other pipe materials and/or wall thickness. Contact your GRINNELL Representative.
- c. Max End Gap is for cut grooved standard weight pipe.



Customer Service: Tel: 800.558.5236 • Fax: 800.877.1295
 Technical Service: Tel: 800.381.9312 • Fax: 800.791.5500

www.grinnell.com/579

Always refer to the Technical Data Sheet TFP1856 for a complete description of all listing criteria, design parameters, installation instructions, care and maintenance guidelines, and our limited warranty.



Johnson Controls 1400 Pennbrook Parkway, Lansdale PA 19446 USA
 Tel: +1 215 362 0700 / 1 800 558 5236

©2020 Johnson Controls. All rights reserved. FS2005002

The power behind **your mission**

