



Fire Detection. Product Catalogue **Nordic.** **Issue 5 2021.**

The power behind **your mission**



FireClass is a revolutionary new class of commercial fire detection products.

FireClass consists of a comprehensive range of fully approved quality products designed and manufactured in Europe.

FireClass is designed to appeal to both the end user and installer with the latest fire detection technology packaged in an easy to install, out-of-the-box, digital open-protocol solution.

A new class of fire detection designed to meet all of your needs from a single supplier.

Introducing a new class
of fire detection



Comprehensive Range

FireClass provides a broad range of detection solutions.

FireClass addressable fire detection products encompass the FC600 fire alarm panel range and are complemented by an enviable range of addressable fire detectors and accessories providing comprehensive protection and minimum false alarms.

FireClass Addressable uses a powerful and robust digital protocol for high reliability and flexibility in installation.



FireClass - A New Class of Fire Detection

Fully Approved

In order to ensure peace of mind for both the installer and end user, FireClass products are third party approved and certified to relevant European standards. FireClass approvals go beyond the minimum requirements including EN54 approval of the FireClass network, EN54-13 system approval, EN54 detector approval in all detection modes and the Prescient III Extinguishing Panel having EN54-2, EN54-4, EN54-13 and EN12094-1 approval.



Digital Open Protocol

FireClass provides a digital protocol solution widely available throughout the market via trade and distribution specialists ensuring freedom of choice for installers and end users.

Developed originally for the harsh marine environment FireClass uses a robust digital protocol that supports various wiring configurations to simplify installation and retrofit applications often problematic for competitors' protocols.

Easy to Install

Ease of installation and engineering underpins the concept of FireClass. It runs through all the products. For example panel installation is simplified by allowing electronics to be easily removed for first fix, whilst simple user friendly configuration software and fault finding tools speed up commissioning.

Field device installation is simplified through the flexibility of the FireClass digital protocol and other features such as the ceiling tile adaptor that can significantly speed up detector installation.

CONTENTS

FireClass General Content	1
FireClass Introduction	3
A New Class of Fire Detection	4
Contents	5
FireClass Addressable Range	06
Introduction to the range	07
Panels	10
Graphics Software	19
Detectors	21
Detector Bases	25
Remote Indicators	28
Ceiling Tile Adapter	30
Callpoints	31
Addressable Fire Alarm Device Series	35
Loop Modules	45
Ancillary Loop Modules	51
FireClass Housings	52
490ST Service & Programming Tool	57
Air Sampling Unit and Accessories	59
Duct Probe Unit	66
Beam Smoke Detectors	68
Optical Beam Smoke Detectors Mounting Accessorie	71
FireClass Conventional Range	72
Detectors	72
700 Series Detectors	73
Detector Bases	77
Manual Call Points	83
Sounders / Beacons	87
Relay Bases	88
Door Release Units	96
Remote Indicators	97
Power Supply Units and Batteries	99
Installation Accessories	101
Detector Test Equipment	106
Public Voice Alarm Systems	111
NEO Extension Controllers	113
ONE System Accessories	120
PAVA System Accessories	123
JCI Speakers	129
FireClass EN54-13 Approved Addressable System	135

Addressable Range





FC600 Panels

- Colour LCD display with 32 zonal LEDs
- Simple to operate user interface
- Flexible loop configurations with up to 1A current to increase use of loop power and address capacity



FireClass FC460 Detection

- Provides the best in class environmental and detection performance with the capability of detecting all fire types.
- Range includes an Optical/Heat Multisensor and Optical/Heat/CO triple multi sensor.
- Automatic self testing of each sensor element.
- 360 degree alarm, fault and isolated LED on each detector.
- Six EN54 approved modes for the Optical/Heat multi sensor.
- Optical/Heat multi sensor can use different modes in day/night settings.
- All optical modes have three EN54 approved sensitivities.
- Lower lifetime cost offering an extended service life.



FireClass Graphics Software

- Graphical emergency management systems.
- Client/server system, allowing several workstations to operate over a network.
- Software for remote monitoring over TCP/IP.
- Multiple site management over IP from a single workstation.



Detector Bases and Accessories

- Range of standard bases, isolator bases, sounder bases and sounder/beacon bases.
- Addressable functional bases can be programmed via a download to adjust volume, tone selection and flash rate complemented by the time saver ceiling adaptor allowing fast and easy installation.



Call Points

- The most recognisable indoor and outdoor callpoint.
- Built in isolator.
- Number of accessories available.



Addressable Modules

- Wide range of input, output and multi function modules to suit all applications.
- Universal detector module to connect two conventional circuits.
- Self powered high voltage relay that can switch mains voltage directly from a module of the FireClass loop.
- A choice of quad input/output modules designed for a variety of interfacing applications.



Sounders and Beacons

- Comprehensive range of visual alarm and visual indication devices as well as sounders and sounder bases
- Wide selection of sounds to match new and existing applications.
- Sounder and beacon elements operated separately by the FireClass panel to facilitate most evacuation strategies.
- Volume, tone and flash rate can be configured by software individually or globally.

Addressable Range Overview



Comprehensive Addressable Range

The FireClass Addressable range of panels offer the customer very easy to install and configure out-of-the-box, stand-alone panels with up to 4 in two loops supporting up to 500 addressable devices. FireClass also offers a full range of low false alarm multi sensor detectors and an extensive array of field devices.

Fully Approved

In order to ensure peace of mind for both the installer and end user, FireClass products are third party approved and certified to relevant European standards. FireClass approvals go beyond the minimum requirements including EN54 approval of the FireClass network, EN54 detector approval in all detection modes and EN54-13 system approval for the networkable panels and a wide range of loop devices.

Freedom of Choice

FireClass provides an open protocol solution widely available throughout the market via trade and distribution specialists ensuring freedom of choice for installers and end users. Easy to use programming software is available to installers and end users, with the majority of service functions available through the panel user controls. Device configuration and text changes now also available through the panel user controls.

Robust Digital Protocol

Developed originally for the harsh marine environment FireClass uses a robust digital protocol that has been proven to withstand poor, damp and damaged cables for over 20 years. The resilient digital protocol works on most existing cables and allows for flexible installations when T's are required. The loop can be made from spurs for a simple upgrade of conventional systems and allows up to 250 addresses per loop with 500mA for broad applications.

Resistance to False Alarm

The range includes a high quality optical smoke detector together with various multi sensor devices. The ultimate in false alarm resilience is provided by the triple sensing detector, combining optical, heat and carbon monoxide sensing technologies. Day/ Night detection modes also allow for false alarm reduction when the building is occupied.

Panels





Panels

FC602S Panels



General Information

The FC602S is a compact two-loop FireClass networkable panel with a shallow housing. It can have two standard-power loops or one high-power loop with each panel having a maximum of 250 addresses. The panel features a colour LCD display with 32 zonal LEDs, and has a maximum capacity of 17Ah batteries.

The FC602S panel is also available as a Scandinavian variant with fireman's keyswitch.

General Features



- 250 addresses available on panel.
- Colour LCD display with 32 zonal LEDs
- Simple to operate user interface
- Flexible loop configurations with up to 1A current to increase use of loop power and address capacity
- Comprehensive point management
- 10000 event log
- Editable quiescent display text
- Extensive special cause and effect programming
- Manual and automatic walk test
- Automatic battery test
- Detector service functions
- Front panel controls enabling text and configuration changes
- Networkable
- Up to seven fully functional repeaters
- Optional easy-mount plate
- Optional expansion kit for mounting additional cards

Product Order Codes

557.200.652 FC602S 1-2 Loop FireClass Panel Shallow Scandinavian

FC604S Panels



General Information

The FC604S is a four loop FireClass networkable panel with a shallow housing. This panel can have four standard-power loops or two high-power loops with each panel having a maximum of 500 addresses. It features a colour LCD display with 32 zonal LEDs, and has a maximum capacity of 17 Ah batteries.

The FC604S panel is also available as a Scandinavian variant with fireman's keyswitch.



General Features

- Colour LCD display with 32 zonal LEDs
- Simple to operate user interface
- Flexible loop configurations with up to 1A current to increase use of loop power and address capacity
- Comprehensive point management
- 10000 event log
- Editable quiescent display text
- Extensive special cause and effect programming
- Manual and automatic walk test
- Automatic battery test
- Detector service functions
- Front panel controls enabling text and configuration changes
- Networkable
- Up to seven fully functional repeaters
- Optional easy-mount plate
- Optional expansion kit for mounting additional cards

Product Order Codes

557.200.653 FC604S 2-4 Loop FireClass Panel Shallow Scandinavian



Panels

FC600 AC and DC Repeaters



**FC32AR 32 zone
AC Repeater**

General Information

The FC600 range of repeaters include both AC and DC powered models, featuring a colour LCD display with 32 LED zonal display.

Both repeaters are also available as a Scandinavian variant with fireman's keyswitch.



General Features

- Colour LCD display with 32 zonal LEDs
- Simple to operate user interface
- Editable quiescent display text
- Front panel controls enabling text and configuration changes
- Up to seven fully functional repeaters
- Optional easy-mount plate (for AC repeater)



**FC32AR 32 zone AC Repeater
Scandinavian**



**FC32DR 32 zone
DC Repeater**



**FC32DR 32 zone DC
Repeater Scandinavian**

Product Order Codes

- 557.200.656** FC32AR 32 zone AC Repeater Scandinavian
557.200.657 FC32DR 32 zone DC Repeater Scandinavian

FC600 range - Product Order Codes for accessories and housings

Order codes for accessories and housings

557.200.658	FCXB-S ancillary housing Scandinavian
557.200.960	FC-ANC ancillary housing
557.200.963	FC-ANC-E empty ancillary housing
557.202.872	P-DHL Document Holder for Ancillary panels
557.202.844	PNI800 panel net interface
557.202.081	FOM800 Glass-fiber module for use with PNI800
557.202.100	FB800 15WAY fuse board

Order codes for spares

508.031.750	BAQ140T24 Switching power supply and battery charger - Max. 5,5A @ 27,6 VDC
508.031.753	BAW75T24 Switching power supply and battery charger - Max. 2,7A @ 27,6 VDC
557.200.661	Spare FC-FI-1 FireClass Field Interface (1-2 Loop)
557.200.961	Spare FC-FI FireClass Field Interface (2-4 Loop)
557.200.663	Spare Display FC-CUI PCBA
557.200.664	Spare Display FC-CUI-S PCBA Scandinavian
557.200.665	Spare FC-CUI-R Repeater Display PCBA
557.200.666	Spare FC-CUI-RS Repeater Display PCBA Scandinavian

Order codes for mechanical parts

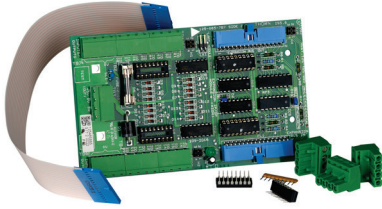
557.200.752	Semi flush fire alarm panel bezel stainless steel 480 x 410 mm
557.200.757	Semi flush fire alarm panel steel bezel painted 480 x 410 mm
557.202.807	P-EXP panel expansion kit
557.202.921	Mounting plate for panels
PS-12170	12V 17 A/H SLA BATTERY

Order codes for CUI and zonal display inserts

557.202.924	Blank CUI inserts - 2x A4 sheet with 6 pcs each
--------------------	---

Panel Accessories

16 Way Universal I/O Expansion Board



The XIOM is a 16 way universal input/output expansion board. The I/O on the XIOM can be set in banks of 8 to operate as follows:

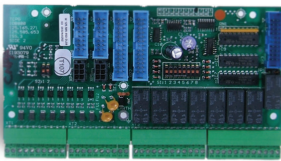
General Features

- LED driver outputs (10mA source).
- Relay Driver Outputs (100mA sink).
- Voltage Monitor Input (8 • 30VdcNormal).
- Volt Free Contact inputs.

Product Order Codes

557.180.016 XIOM

Input/Output Expansion Board

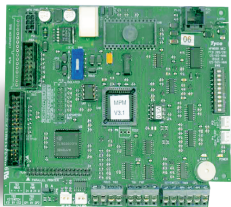


The IOB800 input/output expansion module is an LPCB approved board that provides 8 opto isolated digital inputs and 8 x 24Vdc relay outputs for providing I/O expansion capabilities to the FireClass control panels for interfacing to other fire protection systems and signalling devices. The IOB800 can be driven from either the control panel or from the remote bus.

Product Order Codes

557.202.006 IOB800

Multi Purpose Interface Module

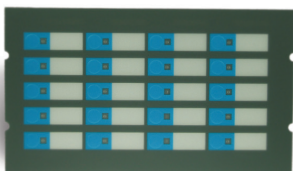


The MPM800 is used to provide various expansion capabilities via the remote bus (RBUS).

Product Order Codes

557.202.012 MPM800

20 Way Status Command Module



The COM820 status command module provides 20 programmable inputs and 20 programmable outputs. Each function includes a command button and yellow status LED with removable legends.

The functionality is programmed in the FireClass control panel with the typical applications being:

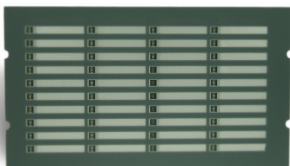
- Manual/off/auto/isolate functions for evacuation or plant control.
- Selective isolate and evacuate functions for fireman's control.
- Selective plant shutdown and override functions.
- Selective system delay and timer functions.

The COM820 can be driven from either the control panel or from the remote bus.

Product Order Codes

557.202.020 COM820

40 Way Fire/Fault LED Zone Indicator



The ANN840 LED annunciation module, provides 40 dual LED indications (red/yellow) that can be programmed to signal alarm and fault states. A slide in/out legend allows the user to customise the indicator labels.

The ANN840 can be driven from either the control panel or from the remote bus.

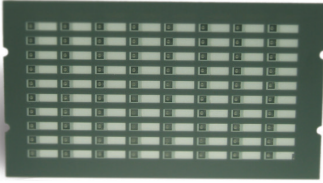
Product Order Codes

557.202.021 ANN840



Panel Accessories

80 Way fire LED Zone Indicator



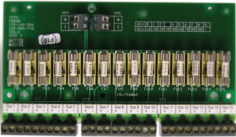
The ANN880 LED annunciation module provides 80 red LED indications that can be programmed to signal various states.

The ANN880 can be driven from either the control panel or from the remote bus.

Product Order Codes

557.202.022 ANN880

Fuse Board



The FB800 fuse board provides terminations for 15 fused 500mA 24Vd output spurs from a single 24Vdc input.

Product Order Codes

557.202.100 FB800

BACnet Interface



BACnet can be provided from a stand-alone FireClass panel or from an FireClass network via the BACnet converter.

The BACnet converter is a mini RISC-based embedded computer which converts fire data to the BACnet communications protocol. The converter needs special firmware that is simply uploaded from a PC.

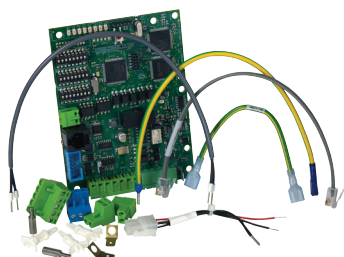
Product Order Codes

557.202.082 BACnet UC-8112-ME-T-LX

557.202.083 RJ12 PVC Cable Male-Male 3M

Network Card EN54 Approved

Network Interface Module



The use of the FireClass Network allows the fragmentation of a number of fire controllers to be drawn into a network system.

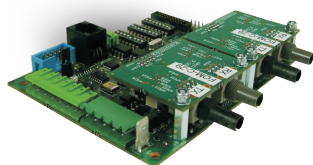
The FireClass Net communications network comprises a collection of network interface modules and peripheral equipment that together form a fault resistant, and flexible peer-to-peer network for the FireClass Digital addressable fire systems controllers.

Product Order Codes

557.202.080 TLI800EN



Network Interface Module with PSU



Product image pictures
TLI800EN without PSU

The use of the FireClass Network allows the fragmentation of a number of fire controllers to be drawn into a network system.

The FireClass Net communications network comprises a collection of network interface modules and peripheral equipment that together form a fault resistant, and flexible peer-to-peer network for the FireClass Digital addressable fire systems controllers.

Provided boxed complete with PSU.

Product Order Codes

557.200.039 TLI800EN with PSU

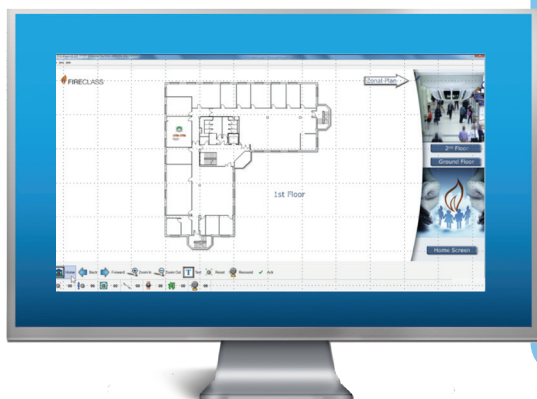


Graphics Software



ADDRESSABLE Panels

FireClass Graphics Software



General Information

FireClass Graphics is a new client/server emergency management system and fire detection graphical user interface designed for use with the FC600 fire alarm control panels.

FireClass Graphics is a Windows-based graphical interface with a high resolution colour display and provides annunciation and status of the complete FireClass detection system using the latest FireClass digital technology and helps monitor and manage an emergency in the event a fire is detected.

General Features

- Real Time visualization of control panel, loop and zone status
- Multi-level maps based on tree structure
- Access device data from any page of the map
- Supports standard PC image file (i.e. gif, jpg, bmp)



Panels License Including Dongle, Software, TLI800EN and PSU



These pieces of fire detection equipment from FireClass come with the FireClass Graphics fire management software which is compatible for between one and four fire alarm panels, the network card TLI800EN, which links all fire controllers together and a power supply unit.

Product Order Codes

557.202.721	FCG-001 Single panel including dongle and software
557.202.722	FCG-002 1-4 panels including dongle and software TLI800EN and Power supply
557.202.723	FCG-003 1-10 panels including dongle and software TLI800EN and Power supply
557.202.724	FCG-004 1-24 panels including dongle and software TLI800EN and Power supply
557.202.725	FCG-005 Additional client licenses

Additional items:

508.070.002	FCG Additional Panel Licence 2-4 Panels
508.070.003	FCG Additional Panel Licence 5-10 Panels
508.070.004	FCG Additional Panel Licence 11-24 Panels
508.070.006	FCG Additional Panel Licence 25-50 Panels
508.070.007	FCG Additional Panel Licence 51-99 Panels
508.070.005	FCG Additional Client licence (work station over TCP/IP)

Detectors



FC460 Series Detectors



General Information

The FC460 range of detectors use the FireClass digital protocol to provide robust and reliable communications to the control panel. A wide range of cable types can be used and the open topology capability of the system makes it ideal for the upgrade of older systems whilst reusing the cables to reduce cost.

FireClass FC460 detectors provide the best in class environmental and detection performance with the capability of detecting all fire types. The range includes an Optical/Heat Multisensor and Optical/Heat/CO Triple Multisensor.

Automatic self testing of each sensor element offers reassurance of operation at all times and the 360° alarm, isolated and fault LED on each detector provides instant line of sight. Fourteen EN54 approved modes/sensitivities for the Optical/Heat Multisensor help to provide one of the best and most versatile detectors on the market.

General Features

- Multiple fire detection modes.
- FireClass detection algorithms.
- CO fire detection technology.
- Up to 250 detectors per loop.
- Optional bi-directional line isolation.
- Remote detector verification & temperature read out.
- Highly featured service tool.
- Programmable alarm LED with 360° viewing angle.
- Optional detector locking pin.
- Variety of sounder and relay detector base.
- Internationally approved.
- Colour variant - RAL9016 Traffic White*



*RAL9016 Traffic White is the target colour. Shade may alter slightly moulding process.



Detectors

Combined Optical and Heat Detector



With its ability to detect a wide range of fires, from flaming to smouldering types, the combined optical and heat multi-sensor detector is the preferred choice for a range of applications including light industrial, retail and office environments. It operates in a number of approved modes and sensitivities that can be dynamically selected to suit different environmental conditions.

Product Order Codes

516.460.501 FC460PH



Optical Detector



More benign environments where any potential fire will be slow burning can be protected using the optical detector. A choice of sensitivities gives this detector a broad range of applications.

Product Order Codes

516.460.502 FC460P



Heat Detector



Complementing the range is the heat sensor which can operate in fixed temperature and rate-of-rise modes. It is most often used in areas where high levels of dust are present or where the environment precludes the use of smoke detectors.

Product Order Codes

516.460.503 FC460H



Smoke, Heat and CO Detector



General Features

For life protection and when the environmental conditions are challenging, the multisensor smoke, heat and CO detector provides the ultimate in detector performance. It uses the three sensor elements in concert to accurately determine the presence of fire with false alarm rejection properties that make it the ideal choice for hotel bedrooms where steam from bathrooms is a common source of false alarms.

Product Order Codes

516.460.504 FC460PC



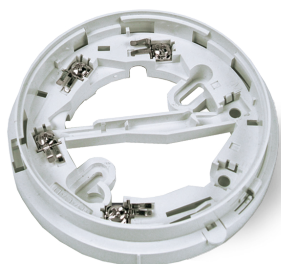
Detector Bases



Detectors

ADDRESSABLE

Detector Base



The new 4B 4" Detector Base is designed to snap-fit to the Ceiling Tile Adaptor or it can be screw fixed to a ceiling in the traditional manner.

General Features

- Aesthetically discreet.
- Superior performance and reliability.
- Designed for rapid installation.
- Remote LED connection.

Product Order Codes

517.050.041 4B



Isolator Base



The 4B-I 4" Isolator base is designed to snap-fit to the ceiling tile adaptor or it can screw fix to a ceiling in the traditional manner. The 4B-I 4" base is designed specifically for use with the FC460 series detectors and provides protection against short circuit faults on the digital addressable loop.

General Features

- Drives a remote indicator.
- Detector locking pin provided with every base.
- Snap fits to the Time Saver Ceiling Tile Adaptor.
- Temporary park position.

Product Order Codes

517.050.043 4B-I





Detector Bases

Deck Head Mounting



Where the detectors are mounted in humid and environmentally challenging situations such as marine or offshore installations, the 4B•DHM deck head mount provides a sealed waterproof mounting which protects the electrical connections in the base. Can be screwed, bolted / welded to the deck head. Supplied with 1 terminal. If more are required, use the optional base accessory.

General Features

- 4 x 20mm gland entries.
- Fits ALL 5" bases.
- IP55 with supplied gasket.

Product Order Codes

517.050.051 4B-DHM



Euro Mount



The euro-mounting base provides a matching back box, which allows the 5" bases to be ceiling mounted with conduit entries for standard 18 and 21mm conduit.

General Features

- 2 x 18mm conduit entries.
- 2 x 21mm conduit entries.
- Fits all 4" bases.
- Accepts up to 8 accessory terminals.
- Base Accessory terminal kit (pack of 10) part number 517.050.612.

Product Order Codes

517.050.052 4B-EM



Remote Indicators





Remote Indicators

Remote LED Indicator



The 801RIL Remote Indicator is used where a detector LED is not visible i.e., when the detector is mounted in a roof void, lift shaft etc.

All detector bases have the ability to drive a remote LED in the event that the installed position of the detector is not easily visible.

Product Order Codes

516.800.908 801RIL

Remote LED Indicator



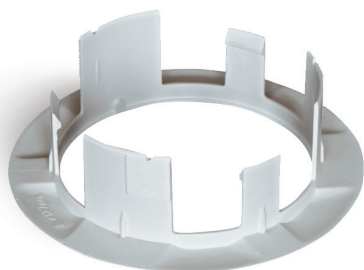
The 801HL Remote Indicator is used where a detector LED is not visible i.e., when the detector is mounted in a roof void, lift shaft etc.

The 801HL remote indicator lamp provides a larger indicator for use in place of the RIL when longer distances are involved or in VdS influenced markets. Typically used to indicate the source of an alarm in buildings with long corridors eg. hotels, hospitals, apartments.

Product Order Codes

516.800.909 801HL

Ceiling Tile Adapter Kit



The Time Saver Ceiling Tile Adaptor is used with the 4B 4" detector base snap fit base and consists of three parts, a bezel and clamp that are fitted to the ceiling tile and a back-box that carries the detector and base assembly. Requires a 127mm diameter hole. The CTA adaptor plate allows this to be used with other devices such as the FC430SB.

General Features

- Cuts installation time by 30%.
- Commission the system before the suspended ceiling is installed.
- Suitable for ceiling tiles from 1mm.
- Made from flame retardant material.
- No additional back-box is required.
- Time saver is designed for use with a new snap-fit 4" detector base
- Adaptor available for use with the AV base & other devices.

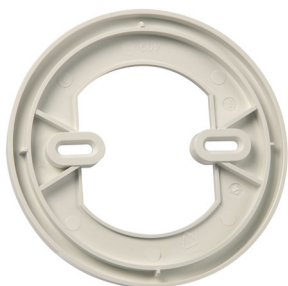
Product Order Codes

517.050.056	CTA-BB CTA Back Box
517.050.057	CTA-BC CTA Bezel and Clamp
517.050.060	CTA Kit*

* Kit part contains SKU 056 and 057



CTA-AP CTA Adaptor Plate



General Features

The CTA adaptor plate allows the Ceiling Tile Adaptor to be used with other devices.

Product Order Codes

517.050.058	CTA-AP CTA Adaptor Plate
--------------------	--------------------------



31

ADR-3ECB1-3C-11

Callpoints



Ceiling Tile Adapter Kit

ADDRESSABLE

Addressable CallPoint with Isolator



General Information

A comprehensive range of call points for use with FireClass addressable systems, using the robust and reliable FireClass open protocol. All the callpoints are designed to enable an alarm signal to be given by a plastic resettable element, which means that the call point can be easily reset after it has been activated. Any change in the status of the switch is immediately communicated to the FireClass Control and Indicating Equipment (CIE). All call points have an integral short-circuit isolator for monitoring the addressable loop wiring.

The integral LED indicator is normally off. When the frangible element is broken, an alarm is registered and the LED will illuminate red. If a section of the loop wiring adjacent to the call point is shorted, the built-in short-circuit isolator trips, isolating the shorted section and the LED is illuminated yellow. The status remains until the short is removed. If required, an optional transparent hinged cover may be installed to guard against accidental operation. Both indoor and outdoor versions are available.

General Features

- Integral short circuit isolator.
- Dual colour LED indication.
- EN54-11 certification.
- Compact, modern styling.
- Test key for fast testing.
- IP67 ingress protection models for external applications.

Addressable Indoor Callpoint with Isolator



FC420CP-I Addressable Indoor Callpoint is designed to monitor and signal the condition of a switch contact that is operated by activating the deformable plastic element. A short circuit isolator is embedded.

Product Order Codes

514.800.805 **FC420CP-I Indoor Callpoint with isolator - no Back Box**

Callpoints

Addressable Outdoor Callpoint with Isolator



FC421CP-I Addressable Break Glass Callpoint is designed to monitor and signal the condition of a switch contact that is operated by activating the deformable plastic element. The FC421CP-I is fitted into a standard weatherproof callpoint housing. IP67 protection degree.

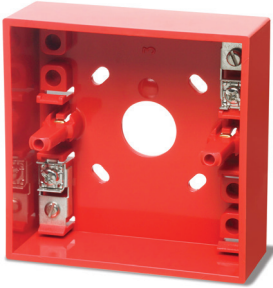
A short circuit isolator is embedded.

Product Order Codes

514.800.806 FC421CP-I Outdoor Callpoint with Isolator



Mount Back Box

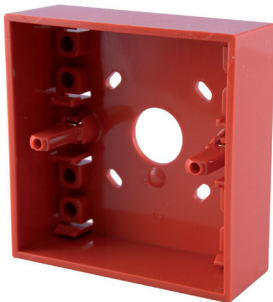


Mount Back Box for FC420CP-I with terminals.

Product Order Codes

10-115 FC420CPB

Standard Back box for Manual Call Point

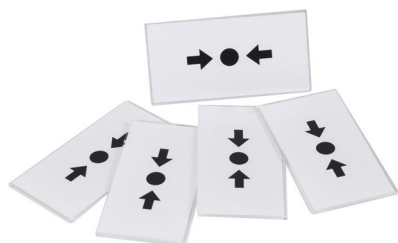


Standard red surface mounting Back Box for FC420CP-I.

Product Order Codes

515.001.021 Standard Back box for manual call point

Spare Glasses for Manual Call Point (Pack of 5)

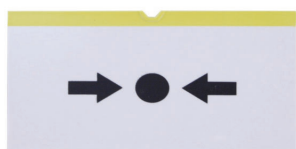


EN54 Part 11 Spare Glass for MCP and CP series Callpoints (Pack of 5).

Product Order Codes

515.001.119 Spare Glasses for Manual Call Point

Deformable FC400 MCP Element

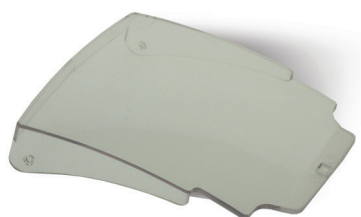


Deformable operating unit "plastic" for use in place of glasses, for kitchens or other areas where glass is not acceptable.

Product Order Codes

515.001.127 Deformable FC400 MCP element

Manual Call Point Plastic Hinged Cover



Callpoint hinged cover for use with MCP call points models (Colour -Clear).

Product Order Codes

515.001.128 Plastic Hinged Cover

Spare Manual Call Point Keys (Pack of 10)



Test key for all MCP and CP style call points.

Product Order Codes

515.001.045 Spare Manual Call Point Keys

Addressable Fire Alarm Device Series



Call Points

ADDRESSABLE

Addressable Fire Alarm Device Series VADs



General Information

The FC440AV range of compact addressable wall sounders with a visual alarm device (VAD) includes three models with the same low current and high output specification; red and white body indoor models plus an IP rated version for either outdoor or harsh environment applications.

General features

- Compact and unobtrusive sounder solution
- Reflective Sound Monitoring (RSM)
- Reflective Light Monitoring (RLM)
- Self-test (**)
- Shorter Light Pulse for faster response
- Indoor and outdoor versions
- Indoor models can be semi-flush or surface mounted including a choice of shallow or deep back box
- IP rated option has a deep surface back box for use with suitable IP-rated glands and cabling
- Power and data from the loop.
- Built-in line isolator
- 16 selectable tones
- Realistic Conventional Bell Tone
- 2 selectable volumes
- 2 selectable flash rates
- Select the tone volume and flash rate using panel configuration software
- Independent addressable control of the sounder and beacon
- Different tones can be used for fire alarm and class change

Notes:

Loop quantities should be verified with the loop calculator available in the FireClass Console and FireClass Designer software.

For more information on the coverage volume please download our brochure and application guide at www.fireclass.co.uk

(*) Products not compatible with FC510/FC520/FC600/FC700 panels

(**) Self-test available only for FC32/64/240

Addressable Fire Alarm Device Series

Addressable Wall Sounder Visual Alarm Device



The FC440AVW is a white indoor loop powered addressable sounder and visual alarm device of the wall category.

Product Order Code

576.440.007(*)

FC440AVW Addressable Wall Sounder VAD White
Shallow and deep backbox

Addressable Wall Sounder Visual Alarm Device



The FC440AVR is a red indoor loop powered addressable sounder and visual alarm device of the wall category.

Product Order Code

576.440.008(*)

FC440AVR Addressable Wall Sounder VAD Red
Shallow and deep backbox

Addressable Wall Sounder Visual Alarm Device IP



The FC445AVR is a red loop powered addressable sounder and visual alarm device of the wall category. This IP rated version is suitable either outdoor or harsh environment applications.

Product Order Code

576.440.009(*)

FC445AVR Addressable Wall Sounder VAD IP Red

Addressable wall sounders



General Information

The FC440S range of compact addressable wall sounders includes three models with the same low current and high output specification; red and white body indoor models plus an IP rated version for either outdoor use or for harsh environment applications.

General features

- A compact and unobtrusive sounder solution
- Reflective Sound Monitoring (RSM)
- Self-test (**)
- Indoor and outdoor versions
- Indoor models can be semi-flush or surface mounted including a choice of shallow or deep back box
- IP rated option has a deep surface back box
- Power and data from the loop. No additional wiring or power supplies required
- Built-in line isolator
- 16 selectable tones
- Realistic Conventional Bell Tone
- 2 selectable volumes
- Select the tone volume using panel configuration software
- Different tones can be used for fire alarm and class change
- Rectangle wall mount for an aesthetically pleasing option
- A locking pin/screw supplied which prevents unauthorized removal

Notes:

Loop quantities should be verified with the loop calculator available in the FireClass Console and FireClass Designer software.
For more information on the coverage volume please download our brochure and application guide at www.fireclass.co.uk
(*) Products not compatible with FC510/FC520/FC600/FC700 panels
(**) Self-test available only for FC32/64/240

Addressable Fire Alarm Device Series

Addressable Wall Sounder White



The FC440SW is a white indoor loop powered addressable sounder of the wall category.

Product Order Code

576.440.003

FC440SW Addressable Wall Sounder White
Shallow and deep backbox

Addressable Wall Sounder Red



The FC440SR is a red, indoor, loop powered, addressable wall sounder.

Product Order Code

576.440.004

FC440SR Addressable Wall Sounder Red
Shallow and deep backbox

Addressable Wall Sounder IP



The FC445SR is a red, outdoor, loop powered, addressable wall sounder. This IP rated version is suitable either outdoor or harsh environment applications.

Product Order Code

576.440.005

FC445SR Addressable Wall Sounder IP

Addressable sounder VAD bases



General Information

The FC440AVB and FC441AVB are addressable sounder bases with a visual alarm device specifically for use with the FireClass addressable detectors. The bases are available as fire alarm sounders with visual alarm device (VAD) in two power outputs, Standard and High. The High power option provides more coverage for the VAD compared to Standard. Each has an address so they can be monitored and controlled from the fire alarm control panel, which is independent of the detector fitted to the base. The power and communications for the sounder, VAD and detector are provided by the digital loop. This helps to reduce installation costs as no additional wiring is required.

General features

- A compact and discrete solution
- VAD approved to EN54-23 with two ranges, standard power and high power available
- High Power option provides a larger VAD coverage volume compared to Standard
- Reflective Sound Monitoring (RSM)
- Reflective Light Monitoring (RLM)
- Self-test (**)
- Shorter Light Pulse for faster response
- Optimise the system design for lowest power requirements and lowest cost installation
- Triple light source
- One point of installation for detector, sounder and visual indicator with no additional wiring
- Independent addressable control of the sounder and beacon
- Built-in line isolator
- Select the tone, volume and flash rate using panel configuration software
- 15 selectable tones. Allows users to select the tone with which they are most familiar.
- Realistic Conventional Bell Tone
- 2 selectable volumes
- 2 selectable flash rates
- Different tones can be used for fire alarm and class change
- VADs and sounders are synchronised over the entire loop
- A locking pin supplied with the base which prevents the unauthorized removal of the detector
- Provides an EN54-23 approved upgrade path for legacy systems

Notes:

Loop quantities should be verified with the loop calculator available in the FireClass Console and FireClass Designer software.

For more information on the coverage volume please download our brochure and application guide at www.fireclass.co.uk

(*) Products not compatible with FC510/FC520/FC600/FC700 panels

(**) Self-test available only for FC32/64/240

Addressable Fire Alarm Device Series

Addressable sounder Visual Alarm Bases



The FC440AVB and FC441AVB are addressable sounder bases with a visual alarm device specifically for use with the FireClass addressable detectors.

Product Order Codes

576.440.006	FC440AVB Addressable Base Sounder VAD Standard Power
576.440.014	FC441AVB Addressable Base Sounder VAD High Power

Addressable sounder base and addressable sounder VID base



General Information

The FC440SB is an addressable sounder base specifically for use with the FireClass addressable detectors. The base incorporates a fire alarm sounder that carries its own address so it can be monitored and controlled from the fire alarm control panel, which is independent of the detector fitted to the base. Both power and communications for the sounder and detector are provided by the digital loop. This helps to reduce installation costs as no additional wiring is required. Additionally, the FC440AIB houses an addressable LED beacon to provide a visual indicator otherwise known as a VID.

General features

- A compact and discrete solution
- One point of installation for detector, sounder and visual indicator with no additional wiring
- Reflective Sound Monitoring (RSM)
- Light is electronically monitored by the control panel
- Self-test (***)
- Independent addressable control of the sounder and beacon
- Built-in line isolator
- Select the tone, volume and flash rate using panel configuration software
- 15 selectable tones. Allows users to select the tone with which they are most familiar
- Realistic Conventional Bell Tone
- 4 selectable volumes
- 2 selectable flash rates
- Different tones can be used for fire alarm and class change
- VIDs and sounders are synchronised over the entire loop
- A locking pin supplied with the base which prevents the unauthorized removal of the detector

Addressable Sounder Base

The P80SB is an addressable sounder base specifically for use with the FireClass addressable detectors.



Product Order Code

576.080.002 P80SB Addressable Base Sounder

Addressable Sounder Base VID

The FC440AIB is an addressable sounder base that houses an addressable LED beacon to provide a visual indicator otherwise known as a VID.



Product Order Code

576.440.010 FC440AIB Addressable Base Sounder VID

VID and VAD Accessories

557.080.001	B-CAP Blanking Cap For Sounder / VID / VAD Bases
557.080.002	A-CON Conduit Adaptor for Sounder / VID / VAD Bases
557.080.007	S-BOXR Shallow Surface Back Box for Indoor Wall Sounder/VAD/VID Red
557.080.008	S-BOXW Shallow Surface Back Box for Indoor Wall Sounder/VAD/VID White
557.080.010	A-BOX Flush Back Box Adaptor for Indoor Wall Sounder/VAD/VID
557.080.011	D-BOXR Deep Surface Back Box for Indoor Wall Sounder/VAD/VID Red
557.080.012	D-BOXW Deep Surface Back Box for Indoor Wall Sounder/VAD/ VID White

Notes:

Loop quantities should be verified with the loop calculator available in the FireClass Console and FireClass Designer software.
For more information on the coverage volume please download our brochure and application guide at www.fireclass.co.uk
(*) Products not compatible with FC510/FC520/FC600/FC700 panels
(**) Self-test available only for FC32/64/240

Addressable Fire Alarm Device Series

Detector activated sounder base



General Information

The FC440DSB is a detector base specifically for use with the FireClass addressable detectors. The base incorporates a fire alarm sounder that is activated directly by the detector.

General features

- A compact and discrete solution
- One point of installation for detector and sounder with no additional wiring
- Low power with up to 250 sounders on a single loop. Provides uncompromised system design solutions
- Simple to select the tone and volume using switches. No special training or tools needed
- 9 selectable tones
- 4 selectable volumes
- A locking pin supplied with the base which prevents the unauthorized removal of the detector
- Replaces FC430SB and it is compatible with FireClass addressable detectors



Product Order Codes

576.440.001 FC440DSB FireClass Detector Base Sounder

Addressable Fire Alarm Device Series

FC442AVB Open Class Base Sounder Beacon



General Information

The FC442AVB is an addressable open class VAD sounder beacon specifically for use with FireClass addressable detectors. The base incorporates a fire alarm sounder, carrying its own address which can be monitored and controlled from the fire alarm control panel independently of the detector. Both power and communications for the sounder and detector are provided by the FireClass digital loop.

General features

- A compact and discrete solution
- One point of installation for detector, sounder and visual indicator
- Reflective Sound Monitoring (RSM)
- Light is electronically monitored by the control panel
- Automatic self-test
- Independent addressable control of the sounder and beacon
- Built-in line isolator
- Select the tone, volume and flash rate
- 15 selectable tones
- Realistic conventional bell tone
- 4 selectable volumes
- 2 selectable flash rates
- VADs and sounders are synchronised over the entire loop
- Replace legacy FC430LPBSB

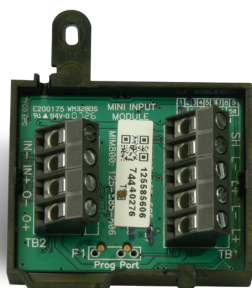
Product Order Codes

576.440.015	FC442AVB Addressable OC Base Sounder Beacon
557.080.001	B-CAP Blanking Cap for Sounder/VID/VAD Bases
557.080.002	A-CON Conduit Adaptor for Sounder/VID/VAD Bases

Loop modules



Mini Input Module



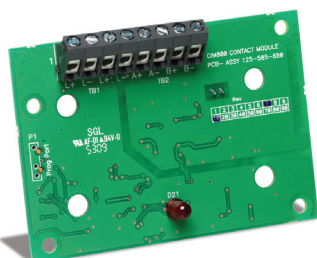
The FC410MIM Mini Input module is designed to monitor fire contacts, such as extinguishing system control, ventilation control, fire door control etc. The module provides one identifiable detection spur which is capable of monitoring multiple normally open contacts or a single normally closed contact.

The FC410MIM can be mounted in any electrical enclosure with sufficient depth to accommodate FC410MIM and the contacts monitored by the IN+ and IN- terminals, ie, no field wiring. The remote LED (if required, not supplied) must be located within the same electrical enclosure.

Product Order Codes

555.800.701 FC410MIM

Contact Input Module



The FC410CIM Addressable Contact Input Module is designed to monitor fire contacts such as extinguishing system control, ventilation control, fire door control etc. The FC410CIM can be configured as:

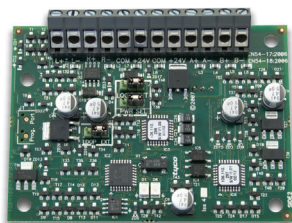
Two spur circuits monitoring multiple normally open contacts, with short circuit giving a fault output.

Two spur circuits monitoring single normally closed contacts, with short circuit giving a fault output.

Product Order Codes

555.800.702 FC410CIM

Gas & Detection Module Indoor



The FC410DDM provides the ability to connect and interface 2 conventional zones, to the FireClass fire alarm controller.

The FC410DDM monitors the status of the detectors and the wiring to the detectors and signals detector and wiring status back to the controller.

The conventional detector circuits can be configured as one Class A circuit (loop) or two Class B spur circuits. The FC410DDM can be either loop powered or driven from a local 24Vdc supply.

It also provides the ability to connect 2 gas detectors (supported by FC500 series panels only).

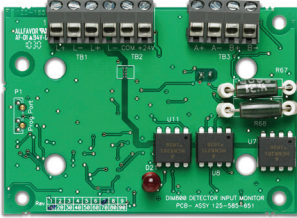
Product Order Codes

577.800.706 FC410DDM



Loop modules

Detector Input Module

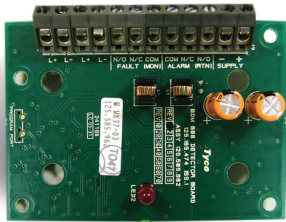


The Addressable FC410DIM provides the ability to connect and Interface one zone of conventional detectors (non-addressable) to the Fire Alarm Controller. The FC410DIM monitors the status of detectors and wiring to detectors and signals detector and wiring status back to the Controller. The FC410DIM requires a 24Vdc power supply.

Product Order Codes

555.800.712 FC410DIM

Beam Detector Interface Module



The FC410BDM Beam Detector Interface Module is designed to power and interface one FIRERAY 50/100/3000/5000 Beam Detector to the FireClass Digital Addressable Loop.

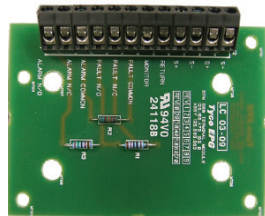
The FC410BDM monitors the Fire and Fault contacts and also monitors for open and short circuits on the connections between the interface and the beam detector. For remote siting of the FIRERAY detector an optional BTM800 Terminal Module can be used.

Product Order Codes

555.800.766 FC410BDM



Beam Detector Module



In many cases it will be necessary to site the FC410BDM Beam Detector Module some distance from the beam detector itself. To minimize and simplify wiring in such cases an optional unit, the BTM800 beam termination module is available.

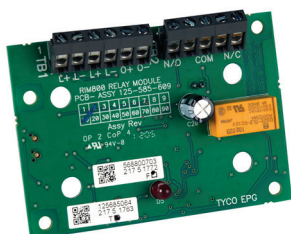
The BTM800 is also housed in a standard double gang ancillary cover and has all the connections and components required to minimize installation time.

Product Order Codes

555.800.067 BTM800



Relay Interface Module



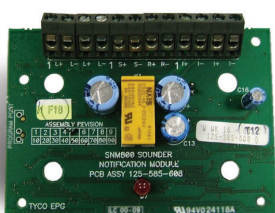
The FC410RIM Relay Interface Module provides one volt-free relay changeover contact on a latching relay. The relay is controlled by a command sent from the FireClass fire controller via the addressable loop.

The relay state (activated, deactivated or stuck) is returned to the controller as confirmation.

Product Order Codes

568.800.703 FC410RIM

Sounder Notification Module

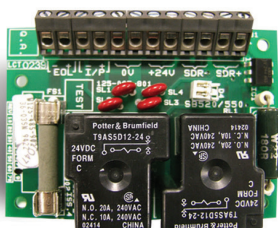


The FC410SNM Sounder Notification Module is designed to provide an output, in response to a command signaled from a controller, to activate a number of polarized and suppressed sounders. The sounders are powered from an independent power supply and the module is capable of passing up to a maximum of 2A (e.g., 24V dc 50mA company sounders or a mixture of different current rated sounders not exceeding a maximum current of 2A).

Product Order Codes

577.800.705 FC410SNM

Sounder Booster Module



The SB520 sounder booster module enables the FC410SNM to drive circuits with higher currents whilst maintaining the reverse polarity integrity line monitoring. It is non-addressable and requires a local 24 V DC supply to drive a single circuit of polarized and suppressed sounders.

Product Order Codes

577.001.023 SB520

Loop Modules

High Voltage Relay Interface



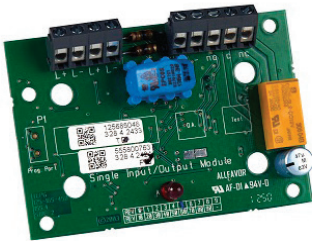
The HVR800 High Voltage Relay Interface is a non-addressable multi-voltage relay module (operating from 24V DC, 24V AC, 120V AC and 240V AC). The encapsulated HVR800 provides a 10 amp volt-free contact that can be used to extend the contact ratings of FC410RIM Addressable Relay Module applications.

A maximum of four HVR800s can be individually driven and controlled by an FC410MIO Small Addressable Multi-Input/Output module if all HVR800s are powered by 120V AC or 240V AC. For ac operation, no external DC power supply unit is required to operate the relay. When used to switch 24V DC, the HVR800 must be provided with an external 24V DC supply which should be switched through the clean relay contacts of an FC410MIO or FC410RIM.

Product Order Codes

568.800.004	HVR800
568.800.034	HVR800 in isolated D800 housing

Single Input/Output Module

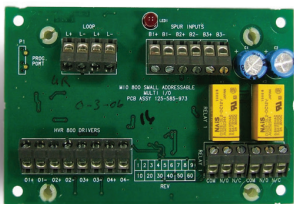


The FC410SIO Single Input/Output Module is designed to provide a monitored open collector input and a volt free relay changeover output. FC410SIO can switch up to 2 A @ 24 VDC.

Product Order Codes

555.800.763	FC410SIO
--------------------	----------

Multi I/O Module

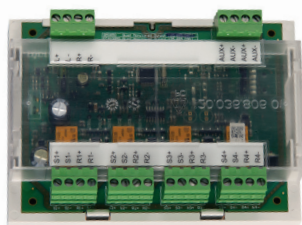


The FC410MIO Multi I/O Module has three inputs and two outputs from latching relays. The inputs can monitor fire contacts such as extinguishing system control, ventilation control, fire door control etc. The two relays outputs provide volt-free relay changeover contacts.

Product Order Codes

555.800.765	FC410MIO
--------------------	----------

Quad Monitored Output Module

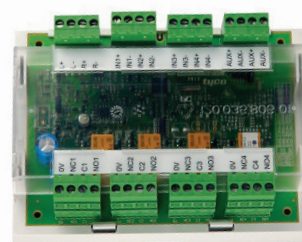


The FC410QMO comprises of four monitored relay outputs that are suitable for 24Vdc sounders. The outputs are monitored for short and open circuit faults.

Product Order Codes

555.800.770 FC410QMO

Quad Input/Output Module



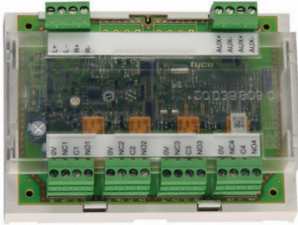
The FC410QIO Quad Input/Output Module is designed to provide four monitored digital inputs and four potential free relay changeover outputs. The outputs can be connected to an Auxiliary Voltage source and its voltage can be monitored. The FC410QIO has an integral FireClass loop isolator. When a section of the loop adjacent is shorted, the isolator trips, isolating the shorted section, then the yellow LED illuminates. This status remains until the short is removed. The FC410QIO must be fitted in a control enclosure or any distributor enclosure. The FC410QIO will be preferably mounted via a DIN rail. Alternatively, it can be directly fixed on the rear side of the enclosure. The digital input monitoring and isolator functions are both configurable. Furthermore, all outputs can be connected to the HVR800 which allows switching to high power galvanic isolated loads.

Product Order Codes

555.800.771 FC410QIO

Ancillary Loop Modules Housing

Quad Relay Module



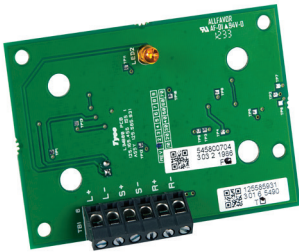
The FC410QRM Quad Relay Module is designed to provide four potential free relay changeover outputs. The outputs are monitored with parallel contacts of the relays. The outputs can be connected to an Auxiliary Voltage source and its voltage can be monitored. The FC410QRM has an integral FireClass loop isolator. When a section of the loop adjacent is shorted, the isolator trips, isolating the shorted section, and illuminating a yellow LED. This status remains until the short is removed.

The FC410QRM must be fitted in a control enclosure or any distributor enclosure. The FC410QRM will preferably be mounted via a DIN rail. Alternatively, it can be directly fixed on the rear side of the enclosure. Furthermore, all outputs are configurable to the HVR - mode (High Voltage Relay), which allows connection of up to four HVR800 modules for switching e.g. 240V loads galvanic isolated.

Product Order Codes

555.800.773 FC410QRM

Line Isolator Module

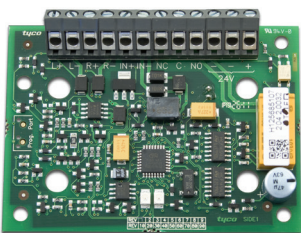


The FC410LI Line Isolator Module is designed to be used on the FireClass addressable controller loop. It monitors the line condition and when detecting a short circuit will isolate the affected section whilst allowing the rest of the loop to function normally. The purpose of the FC410LI Line Isolator Module is to ensure that, on a looped addressable system, no short circuit fault can disable more detection devices than would be lost on a conventional non-addressable fire circuit.

Product Order Codes

545.800.704 FC410LI

Door Control Module



When activated, either by a fire signal or by a fault or isolation within the fire door zone, the FC410TSM will interrupt the supply to the door holders and the doors under control of the module will close. The module has the provision to monitor a contact to report to the fire controller if the door fails to close. The module also includes a built-in line isolator.

Product Order Codes

555.800.769 FC410TSM

FireClass Housings





FireClass Housings

FireClass Housings



FireClass ANC Ancillary Housing are metal enclosures that can fit FireClass addressable panel expansions and loop ancillary modules. They are available in different sizes, with blank doors and with one or two cutouts.

Product Order Codes

557.202.704	FireClass ANC1-D Ancillary / Document Housing [1 x cut out door]
557.202.705	FireClass ANC 2 -D Ancillary / Document Housing [2 x cut out door]
557.202.706	FireClass ANC 3 -D Ancillary / Document Housing [2 x cut out door]
557.200.658	FCXB-S Ancillary Housing Scandinavian
557.202.872	P-DHL Document Holder for Ancillary panels
557.200.960	FC-ANC Ancillary Housing
557.200.963	FC-ANC-E Empty Ancillary Housing

IP66 Enclosure with DIN Rail for QUAD Modules



A polystyrene/polycarbonate IP66 rated housing prefitted with a DIN rail for mounting either 1 x Quad Input/Output Module (FC410QIO), or 1 x Quad Monitored Output Module (FC410QMO) or 1 x Quad Relay Output Module (FC410QRM) complete with a transparent front cover.

Product Order Codes

557.201.410	IP66 Enclosure with DIN Rail for QUAD Modules
--------------------	---



Ancillary Module Housing



FC470MDGB IP65 ancillary housing 140W x 120H x 70D mm incorporates window to view module LED.

Product Order Codes

557.201.401	FC470MDGB IP65
--------------------	----------------



Ancillary Loop Modules Housing

Ancillary Cover for Use with Modules



Ancillary cover for use with FC410 series modules. Will fit onto a MK style double gang back box.

Product Order Codes

517.035.007 FC470CV

White D/Gang B/Box

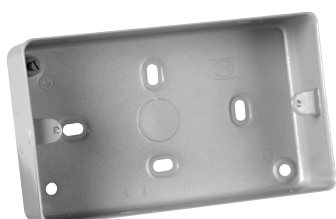


FC470DGB White plastic surface mount MK backbox for use with 800 Series addressable ancillaries using 517.035.007 cover.

Product Order Codes

517.035.010 FC470DGB

B Metal D/Gang B/Box



FC470MDGB Metal surface mount MK backbox for use with FC410 Series addressable ancillaries using 517.035.007 cover.

Product Order Codes

517.035.011 FC470MDGB

Ancillary Loop Modules Housing

Dry Line B/Box



FC470DLB Dry lining flush mount (for plasterboard etc) MK backbox for use with FC410 Series addressable ancillaries using 517.035.007 cover.

Product Order Codes

517.035.015 FC470DLB

DIN Rail Mounting Kit for FC410MIO



Used to mount a FC410MIO module on a DIN rail.

Product Order Codes

557.201.303 DIN Rail Mounting Kit

Steel D/Gang B/Box



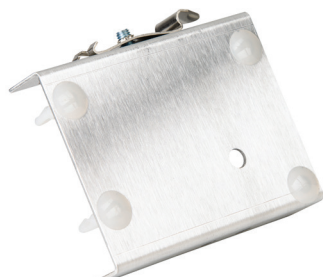
FC470FMB steel flush mount MK backbox for use with FC410 Series addressable ancillaries using 517.035.007 cover.

Product Order Codes

517.035.014 FC470FMB

Loop modules

DIN Rail Mounting Bracket



DIN rail mounting bracket enables any module which can be mounted to a FC470CV ancillary cover to be DIN rail mounted using this bracket.

Clip-on PCB mounting pillars are included. Will fit standard 35 mm DIN Rail bracket.

Product Order Codes

547.004.002 DIN Rail Bracket to Mount Ancillary Modules to 35mm DIN Rail.

490ST Service and Programming Tool



Loop Modules

ADDRESSABLE

Service and Programming Tool



General Information

The FireClass Addressable Ancillary Smoke Detector Programmer Address Loop Service Tool FC490ST is a powerful and flexible loop service tool for assistance in smoke detector and ancillaries' installation, commissioning, diagnostics and service of FireClass fire detection systems.

The addressable detector programming tool allows all the addressable smoke detector and ancillaries to be interrogated, tested and programmed. Suitable for desktop or single handed operation the FireClass Addressable Service Tool FC490ST tool is battery operated using standard rechargeable batteries.

General Features

- Read/Write the detector/ancillary address.
- Display temperature/CO levels and smoke obscuration.
- Programming of the LED.
- Testing the detector remote LED and control outputs.
- Perform the detector self verification test function.
- Display detector contamination level.
- Controlling ancillary outputs.
- Reading ancillary status.
- Power management options.

Product Order Codes

516.460.490	Hand held Service and Programming Tool
517.050.015	Volume Adjustment Tool
516.800.922	Auxiliary programming cable FC490ST
516.800.923	Service accessory kit – FC branded.
516.800.924	Spare pin for FC490ST programming cable (10 pcs)

Air Sampling Unit and Accessories



Air Sampling Unit and Accessories

ADDRESSABLE



Air Sampling Unit and Accessories

VESDA LaserFOCUS Smoke Detector VLF-250 and VLF-500



General Information

The VESDA VLF-250 incorporates VESDA early warning laser based aspirated smoke detection technology. It provides localized fire risk management solutions for small, critical environments. The VESDA LaserFOCUS VLF-250 monitors areas up to 250 m² (2500 sq. ft.) dependant on local codes and standards.

The VESDA VLF-500 detector is a very early warning smoke detector designed to protect small, business-critical environments of less than 500 m² (5,380 sq. ft.)

The detector works by continually drawing air into sampling holes in a pipe network. The air is filtered and passed into a detection chamber where light scattering technology detects the presence of very small amounts of smoke. Detector status information is communicated on the detector display and via relays or optional interface cards.

The patent-pending Ultrasonic Flow Sensing used in the VLF provides a direct reading of the sampling pipe flow rate. The system is immune to air temperature and pressure changes and is unaffected by contamination. The VLF is the first air sampling smoke detector to use ultrasonic flow sensing.

In operation, the unique Smoke Dial display provides the user with an instant understanding of a smoke event, even from a distance. Should a fault occur, the user simply opens the field service door and activates the Instant Fault Finder feature to determine the specific fault condition. This information can then be passed onto their fire service company, ensuring that service technicians arrive onsite fully prepared.

The new VESDA LaserFocus Smoke detector is supplied with the correct fittings and pipes and is accompanied with a Class A Warranty.

General Features

- Out-of-the-Box Installation and Commissioning
- Ultrasonic Airflow Sensing
- Laser-Based Absolute Smoke Detection
- Pre-engineered pipe network designs
- Programmable Alarm Thresholds
- Clean air barrier optics protection
- Instant Recognition Display
- Instant Fault Finder™
- AutoLearn™ Smoke
- AutoLearn™ Flow
- Field Service Access Door
- Multiple Event Logging in separate logs
- Event log – up to 18,000 events
- Offline/online configuration capability



Product Order Codes

516.018.504	Filter Cartridge (Spare)
VLF-250-03	VESDA VLF-250 Scandic
VLF-500-03	VL-500 Scandic
516.018.022	VIC-010 LASERFOCUS VNET CARD
VIC-020	Multi-Function Control Card

Listings / Approvals and Approvals Compliance

UL, ULC, FM, CFE, LPCB, VdS, VNIPO, AFNOR, ActivFire, CE - EMC and CPD, EN 54-20 Class A/B/C

Pipe 25mm Diameter



VESDA aspirating pipes, printed along its length on opposite sides at 450mm intervals. 3 m length pipes. Order in multiples of 10 lengths.

Product Order Codes

Red: JC008-25
Grey: JCG008-25

Socket 25mm



Straight socket for 25mm pipe. Order in multiples of 10.

Product Order Codes

Red: JC005-25
Grey: JCG005-25

Socket Union 25mm



Socket union to facilitate servicing of pipework. Order in multiples of 1.

Product Order Codes

Red: JC003-25
Grey: JCG003-25

Bend 25mm



90 degree Long Radius bend. Order in multiples of 5.

Product Order Codes

Red: JC001-25
Grey: JCG001-25

Air Sampling Unit and Accessories

Elbow 25mm



45 degree elbow. Order in multiples of 5

Product Order Codes

Red: JC002-25

Grey: JCG005-1

End Cap 25mm



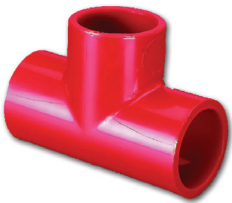
End cap 25mm. Order in multiples of 5.

Product Order Codes

Red: JC007-25

Grey: JCG007-25

Equal Tee 25mm



Equal Tee 25mm. Order in multiples of 5.

Product Order Codes

Red: JC006-25

Grey: JCG006-25

Pipe Clip 25mm



Pipe Clip 25mm. Order in multiples of 10.

Product Order Codes

Red: JC004-25

Grey: JCG004-25

Socket Adaptor 25mm to 3/4"



Socket adaptor, imperial to metric, to extend existing systems. Order in multiples of 5.

Product Order Codes

Red: JC005-1
Grey: JCG005-1

Solvent Cement (0.25 L Tin)



Solvent cement.

Product Order Codes

JC011

Capillary Tube Conical Sample Point Assembly



Capillary Tube Conical Sample Point Assembly. 25mm socket adaptor + 2m capillary tube (tube colour - red).

Product Order Codes

JC019C-25

Capillary Tube Flush Sample Point Assembly



Capillary Tube Conical Sample Point Assembly. 25mm socket adaptor + 2m capillary tube (tube colour - red).

Product Order Codes

JC019F-25

Air Sampling Unit and Accessories

Capillary Tube 10mm



Capillary Tube 10mm o/d x 30m length (tube colour - red).

Product Order Codes

JC018-R

Sampling Point Label (1Reel)



Sampling point label. Order in multiples of 100.

Product Order Codes

JC010

Pipe Clip 25mm

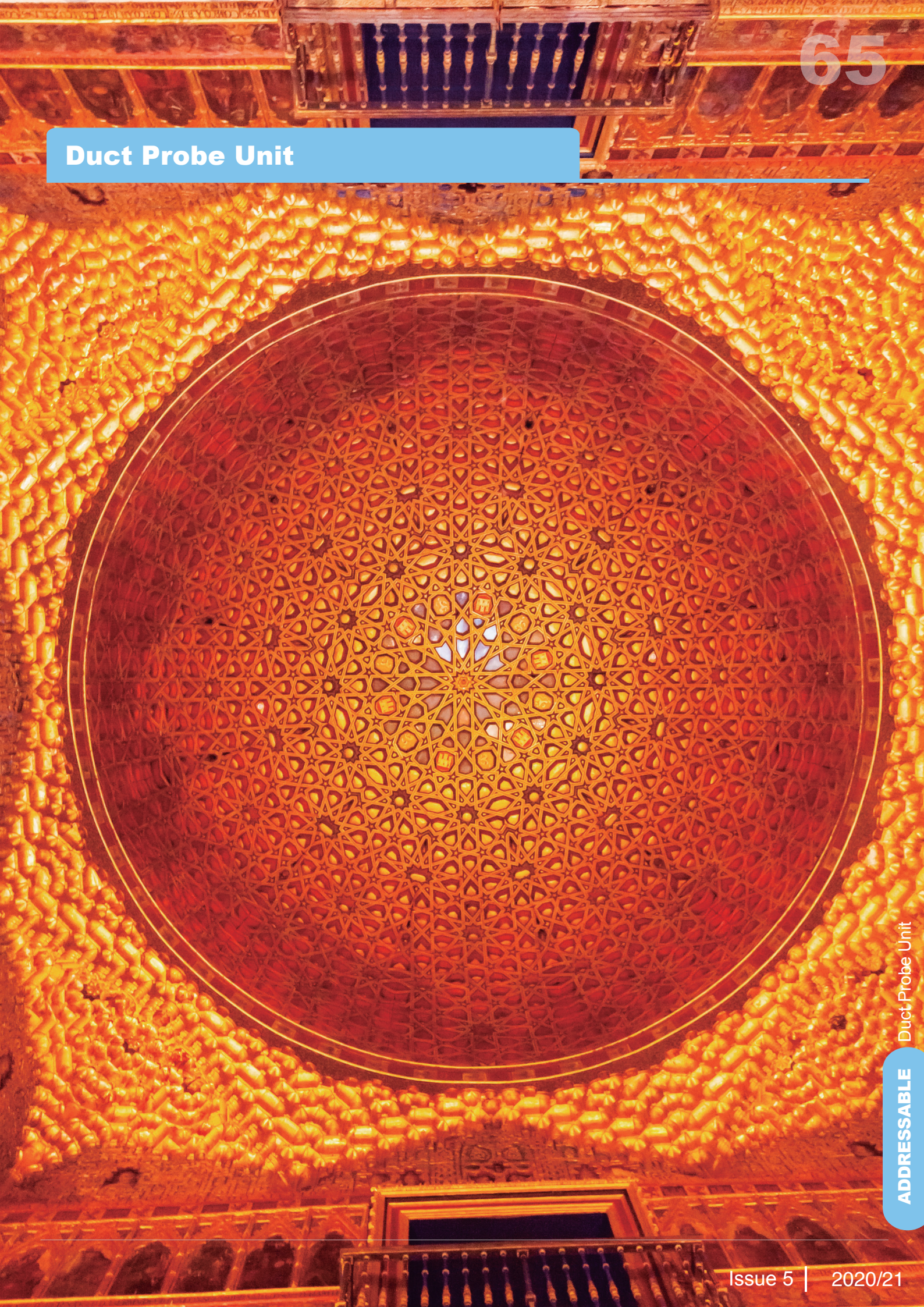


Pipe Clip 25mm. Order in multiples of 10.

Product Order Codes

JC004-25

Duct Probe Unit



ADDRESSABLE Duct Probe Unit

Duct Probe Unit

DPK6 Duct Probe



General Information

The DPK6 duct probe units have been developed to detect smoke in ventilation ducts and offer significant benefits in terms of performance and installation. For most applications, smoke or combustion products are likely to have travelled some distance ageing the smoke prior to reaching the probe unit. It is therefore normally recommended that an optical smoke detector be fitted, and this is often a requirement of building regulations. The DPK6 duct probe units use FC460PH Multi Sensor Smoke Detectors.

The DPK6 Duct Probe units are not normally mounted directly inside ducts because the airflow only allows the detector to sample air from a small section of the duct and such detectors would rapidly become dirty. Instead, ducting is protected by the use of probe units which gather air from a cross section of the duct and pass it through a smoke detector head.

The system comprises only one single duct probe tube which improves efficiency and reduces installation time. The DPK6 duct smoke detector housing is designed to comply with the stringent demands of new European standard EN 54-27. The system fulfils all the requirements for safe fire detection with airflow speeds from 1,5 m/s to 20 m/s.

For the airflow through the adaptor to be representative of the airflow in the ventilation duct, the detector should be installed at a place where normally flow meters etc. are sited.

Please see the mounting instructions supplied with the product.

General Features

- DPK6 for use with FC460PH with built-in base.
- Designed to comply with EN 54-27.
- One-pipe air sampling system.
- Patented Cap-up Venturi pipe and duct housing.
- Test hole on cover.
- Simple installation.
- Sensitive flow indicator.
- Simple service and maintenance.
- Range of aluminium probe tubes are available for ducts up to 2700 mm.

Product Order Codes

517.025.056	DPK6 Duct Probe with with built-in base
517.025.058	DPK6-60 - Duct Probe Tube 60 cm
517.025.059	DPK6-150 - Duct Probe Tube 150 cm
517.025.060	DPK6-280 - Duct Probe Tube 280 cm
517.025.061	DPK6-MB - Duct Pobe Mounting bracket
517.025.055	DPKF – Filter (pack of 10)

Beam Smoke Detectors



Beam Smoke Detectors

ADDRESSABLE

Beam Smoke Detectors

Auto Aligning Optical Beam Smoke Detectors



General Information

The FIRERAY 5000 motorised, auto aligning infrared optical beam smoke detector can now be installed with up to four detector heads per system, thus saving on installation time and costs. This innovative system has been designed from the ground up to include pioneering technology that fully addresses the needs of the installer and user, both now and in the future.

Once the detector heads are connected, using the Easifit First Fix system, an integral LASER, which is aligned along the optical path of the beam, can be activated. This allows the reflective prism to be sighted quickly and with confidence. Once the LASER has been used to coarsely align the beam, the Auto-Optimise beam alignment system takes over and automatically steers the beam into the optimum position.

Each detector head is independently configurable from 8m through to 100m and has its own individual fire threshold. The System Controller retains one set of Fire and Fault relays that is common to all detectors that are installed.

The FR5000 MultiHead is supplied with one detector head and reflector for single beam operation from 8 to 50 meters. Up to 3 additional detector heads can be added to the controller to enable larger or more complex areas to be protected (subject to local codes).

General Features

- Motorised auto-aligning.
- Up to 4 detectors per system controller.
- Each detector configurable from 8m to 100m.
- Integral LASER.
- Auto-align fast automatic beam alignment.
- Auto-optimize building movement and contamination compensation.
- Worldwide approvals including EN54:12 and UL268.
- Controller dimensions (WxHxD): 202 x 230 x 81 mm.
- Detector dimensions (WxHxD): 134 x 135 x 134 mm.

Product Order Codes

FIRERAY 5000 516.015.020

FR 5000 Detector Head

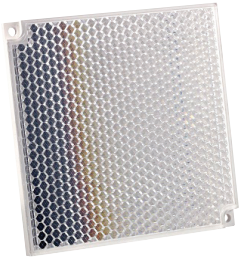


Each detector head is independently configurable from 8m through to 100m and has its own individual fire threshold. The System Controller retains one set of Fire and Fault relays that is common to all detectors. that are installed.

Product Order Codes

516.015.021

Reflector



Reflector 100 X 100mm 4 reflectors are required for distances from 50 to 100m.

Product Order Codes

516.015.007

Fireray® One



FIRERAY One Auto Aligning Infrared Optical Beam Smoke Detector
With no specialist tools or knowledge needed for installation and operation, the Fireray One is a standalone beam detector that prioritises ease of installation. The FIRERAY ONE is perfectly suited for small warehouses, with its cost effective protection and simple installation, as well as new buildings, with the Building

Product Order Codes

516.015.023 FIRERAY One Auto Aligning Infrared
Optical Beam Smoke Detector

Optical Beam Smoke Detector Mounting Accessories



Optical Beam Smoke Detector Mounting Accessories

Universal Mounting Bracket



The Universal Mounting Bracket can be used with the Fireray 5000 detector head and the 1 or 4 way prism plates to enable the detector head or prism plates to be easily mounted and adjusted when fixing to angled walls or cladding.

Product Order Codes

5000-005

Flat Mounting Plate for 1 to 4 Prisms



The Flat Mounting Plate is a metal plate which will support a single prism or 4 prisms, the side mounting holes are compatible with Unistrut® racking systems.

Product Order Codes

5000-006

Prism Mounting Plate for 4 Prisms

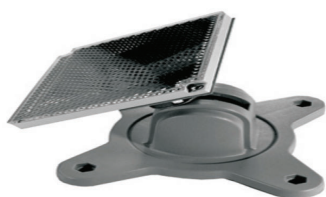


The large prism plate will securely mount 4 prisms and is designed to be used in conjunction with the Universal Mounting Bracket (not included).

Product Order Codes

5000-007

Prism Mounting Plate for 1 Prism



The small prism plate will securely mount a single prism and is designed to be used in conjunction with the Universal Mounting Bracket (not included).

Product Order Codes

5000-008

Detectors



700 Series Detectors



General Information

The 700 Series of detectors are microprocessor-based conventional detectors and have been designed to act as a drop-in replacement for, and are backwards compatible with, the equivalent legacy 600 Series.

These intelligent, conventional detectors come with built-in drift compensation in the P and PH variants. Once the drift compensation limit has been reached, i.e. the detector has become too dirty to operate at the nominal sensitivity, the detector will automatically adjust the sensitivity to allow it to continue operating. Each detector comes with its own built-in micro-processor offering advanced algorithms, resulting in the same detection performance and false-alarm rejection as the latest Gen6 detectors.

The PH detector is approved to EN54-29, a multi-sensor standard for smoke and heat. This is the first conventional detector from JCI to be approved to this non-harmonised standard.

Application

As each type of detector responds to a particular “fire characteristic”, the relative speed of response of the detector is therefore dependent upon the type of fire being detected.

The range of 700 Series conventional detectors have been designed to provide the earliest possible warning of a fire condition, with a minimum possibility of false/unwanted alarms.



General Features

- Designed for fast, easy installation
- Low operational voltage
- Available in 5 variants: Optical, Heat 60°C & 90°C, RoR Heat, Optical Heat
- Backward compatibility with 600 series
- Compatible with 4”B-D, 4B and 5B bases
- Low profile and discreet design
- Built-in microprocessor offering improved algorithms and drift compensation

Optical Smoke Detector



General Features

The 701P smoke detector operates by sensing the optical scatter from smoke particles generated in a fire. The micro-processor inside the detector allows for threshold compensation, meaning the detector will adjust sensitivity levels to compensate for dust and dirt levels in the chamber, resulting in fewer unwanted alarms and an extended detector life.

Product Order Codes

516.900.001 701P



High Performance Optical Detector



General Features

The 701PH optical heat detector operates by sensing the optical scatter from smoke particles generated in a fire, and a rapid rate of rising temperature increases the smoke detection sensitivity for normal ambient conditions, the high performance optical detector behaves as a normal optical detector. The micro-processor inside the detector allows for threshold compensation, meaning the detector will adjust sensitivity levels to compensate for dust and dirt levels in the chamber, resulting in fewer unwanted alarms and an extended detector life. The 701PH is approved to EN54-29, a multi-sensor standard for smoke and heat.

Product Order Codes

516.900.002 701PH



Heat Detector - Rate of Rise



General Features

701H rate-of-rise heat detector detects abnormally high rates of rising temperature. The micro-processor inside the detector offers advanced algorithms resulting in improved false-alarm rejection rates. Can be used in areas where smoke detectors are unsuitable due to environmental conditions such as Kitchens, Locker rooms and canteens.

Product Order Codes

516.900.003 701H



700 Series Detectors

Heat Detector - Fixed Temperature



General Features

The 702H and 703H heat detectors detect abnormally high static temperatures of 60°C and 90°C, respectively. They can be used in areas where smoke detectors are unsuitable due to environmental conditions such as Kitchens, Locker rooms and canteens.

Product Order Codes

516.900.004 702H - Heat detector, Fixed, 60°C...
516.900.005 703H - Heat detector, Fixed, 90°C



Multi Sensor CO and Heat Detector



General Features

601CH detector is a unique general purpose fire detector which provides very early warning of slow smouldering fires. Ideal for sleeping risks the CO fire detector is also well suited to many applications where heat detection is insufficient but smoke detection causes false alarms.

As CO travels more freely than smoke the position of CO fire detectors is more flexible.

This feature is particularly useful in large complex structures such as atria and warehouses, where the positioning of smoke detectors is difficult.

Product Order Codes

516.600.004 601CH



Solar Blind Infra Red Flame Detector



General Features

A detector that is ideal for protecting large open areas without sacrificing speed of response to flaming fires. A unique detector ideal for fast response to flaming fires typically caused by flammable liquids.

Product Order Codes

516.600.006 601F

Detector Bases



Detector Bases

General Information

The FireClass range of conventional detector ancillaries have been designed with the needs of the installer in mind. The range includes standard and diode bases, sounder, beacon and relay bases and the unique time saver ceiling tile adaptor.

Many of today's buildings feature a false or suspended ceiling. Installation of fire detectors to this type of ceiling has been seen as both difficult and time consuming with the installation requiring the ceiling to be in place before the detector base and associated second fix can take place.

By using the new Time Saver Ceiling Tile Adaptor this whole installation process has been made much easier. The complete process from wiring connection to detector commissioning can now take place as a single operation and be completed even before the ceiling has been installed.

A choice of functional bases include the 601SB(D) EN54-3 approved low current sounder base with adjustable volume and tone.

They do not require the use of a separate base and fit directly to a standard electrical box or the CTA adaptor plate.

The MC600 relay base provides dual relay contacts for signalling external devices on conventional detection systems. Very low operating current even when the relay is energised, enable the relay base to be used without additional power. The relay contacts operate when the detector enters the alarm condition.



General Features

- Aesthetically discreet both standard and diode base.
- Superior performance and reliability.
- Designed for rapid installation.
- Remote LED connection
- Sounder base with adjustable volume control & selectable tones.
- Extra low current sounder bases.
- Double pole relay base for local control.
- Time saver ceiling tile adaptor reduces installation time on suspended ceilings by 30%.
- Adaptor plate allows the time saver ceiling tile mount to be used with a wide range of alarm accessories.

Detector Base



The new 4B 4" Detector Base is designed to snap-fit to the Ceiling Tile Adaptor or it can be screw fixed to a ceiling in the traditional manner.

General Features

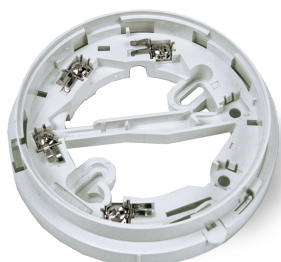
- Aesthetically discreet.
- Superior performance and reliability.
- Designed for rapid installation.
- Remote LED connection.

Product Order Codes

517.050.041 4B



Diode Base



The 4B-D Conventional Diode Base is a standard 4 inch base fitted with a continuity diode, for use with all 600 series and 700 series detectors. The base is designed to ensure that conventional systems meet the requirements of BS5839 Pt:1 for callpoints placed after detectors.

General Features

- Compatible with 700 series LowProfile Detector Range.
- Designed for two wire operation.
- Facility to drive a remote indicator.
- A temporary park position is provided so that the field wiring can be tested with the detector in situ.
- May be fitted directly to a British or European conduit box or directly into the ceiling

Product Order Codes

517.050.045 4B-D





Detector Bases

Deck Head Mounting



Where the detectors are mounted in humid and environmentally challenging situations such as marine or offshore installations, the 4B DHM deck head mount provides a sealed waterproof mounting which protects the electrical connections in the base. Can be screwed, bolted / welded to the deck head. Supplied with 1 terminal. If more are required, use the optional base accessory.

General Features

- 4 x 20mm gland entries.
- Fits ALL 5" bases.
- IP55 with supplied gasket.

Product Order Codes

517.050.051	4B-DHM
517.050.612	Terminal Kit (x10)



Euro Mount



The euro-mounting base provides a matching back box, which allows the 5" bases to be ceiling mounted with conduit entries for standard 18 and 21mm conduit.

General Features

- 2 x 18mm conduit entries.
- 2 x 21mm conduit entries.
- Fits all 4" Bases.
- Accepts up to 8 accessory terminals.
- Base Accessory terminal kit (pack of 10) part number 517.050.612.

Product Order Codes

517.050.052	4B-EM
517.050.612	Terminal Kit (x10)



Universal 5" Base With Relay



The 5B is the most common base designed to fix directly to the ceiling or various common backboxes. This base allows a detector to be plugged in directly.

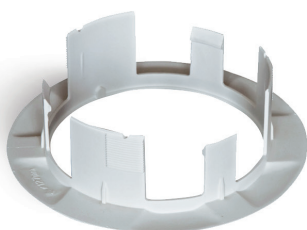
General Features

- Variety of fixing options.
- Remote LED connections.
- Park position and address flag holder.
- Integral breakout locking key.

Product Order Codes

508.031.751	MUB-RV
--------------------	--------

Ceiling Tile Adapter Kit



The Time Saver Ceiling Tile Adaptor is used with the 4B 4" detector base snap fit base and consists of three parts, a bezel and clamp that are fitted to the ceiling tile and a back-box that carries the detector and base assembly. Requires a 127mm diameter hole. The CTA adaptor plate allows this to be used with other devices such as the FC430SB.

General Features

- Cuts installation time by 30%.
- Commission the system before the suspended ceiling is installed.
- Suitable for ceiling tiles from 1mm.
- Made from flame retardant material.
- No additional back-box is required.
- Time saver is designed for use with a new snap-fit 4" detector base.
- Adaptor available for use with the AV base & other devices.

Product Order Codes

517.050.056	CTA-BB CTA Back Box
517.050.057	CTA-BC CTA Bezel and Clamp
517.050.060	CTA Kit*

* Kit part contains SKU 056 and 057



CTA-AP CTA Adaptor Plate



General Features

The CTA adaptor plate allows the Ceiling Tile Adaptor to be used with other devices.

Product Order Codes

517.050.058	CTA-AP CTA Adaptor Plate
--------------------	--------------------------



Detector Bases

Protective Cage



White powder coated steel protective cage for Series FC400 Detectors fitted with a sounder base. Dimensions: 120mm dia x 80mm deep

Product Order Codes

517.050.011 Protective Cage

Protective Detector Sounder Base Cage



Robust steel protective cage for Series FC400 detector ranges using the 5" bases. Ideal for schools and sport halls or whenever detectors need protection. Strong coated steel construction with 4 point fitting.

Product Order Codes

517.050.614 Protective Detector Sounder Base Cage

Call Points



Manual Call Points



General Information

A comprehensive range of callpoints for use with FireClass conventional systems. All the callpoints are designed to enable an alarm signal to be given by breaking a glass element with the option of a resettable, deformable element. If required, an optional transparent hinged cover may be installed to guard against accidental operation.

General Features

- Distinctive and recognizable styling.
- Surface or flush mounting.
- Test key facility, speeds maintenance visits.
- Optional transparent hinged cover.
- Optional plastic deformable call point element for food processing areas.
- IP67 waterproof models for external application.
- Colour variant - RAL3001, Red*

Conventional Manual Call Point with Glass



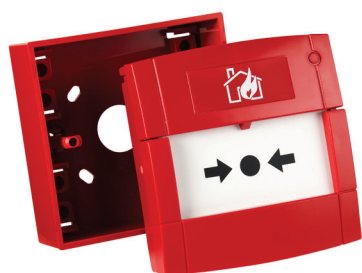
Conventional manual alarm call point with integral alarm LED and activation resistor. Operation is by break glass. This call point is semi flush mounted or can be surface mounted using back box 515.001.021 or 10-115, and comes with a test key.

Product Order Codes

- | | |
|--------------------|---|
| 2501012 | Conventional Manual Call Point with Glass |
| 2501013 | Conventional Manual Call Point with Glass (with back box) |
| 515.001.021 | Back Box 10-115 - Back Box SR2-T SUS528W |

*RAL3001, Red, is the target colour. Shade may alter slightly during moulding process.

Conventional Manual Call Point with Plastic Element



A conventional manual alarm call point with integral alarm LED and activation resistor. Operation is by resettable deformable element. Comes complete with a back box and a test key.

Product Order Codes

2501234 Conventional Manual Call Point with Plastic Element
515.001.021 Back-Box

Conventional Weatherproof Manual Call Point



A weatherproof manual alarm call point with integral alarm LED and activation resistor making it compatible with the Prescient III Suppression Panel. Operation is by break glass. This call point is surface mounted and comes complete with back box & test key.

Product Order Codes

2501176 Conventional Weatherproof Manual Call Point
515.001.021 Back-Box



Manual Call Points

Spare Plastic Element for Manual Call Point

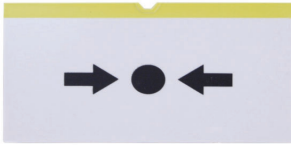


EN54 Part 11 Spare Plastic for Callpoints (Pack of 5).

Product Order Codes

515.001.119 Spare Plastic Element for Manual Call Point

Spare Plastic Element for Manual Call Point



Deformable operating unit "plastic" for use in place of glasses, for kitchens or other areas where glass is not acceptable.

Product Order Codes

515.001.127 Spare Plastic Element for Manual Call Point

Manual Call Point Plastic Hinged Cover



Callpoint hinged cover for use with MCP & CP style callpoint models (Colour - Clear).

Product Order Codes

515.001.128 Manual Call Point Plastic Hinged Cover

Spare Manual Call Point Keys (Pack of 10)

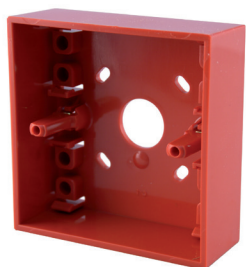


Test key for all MCP and CP style callpoints.

Product Order Codes

515.001.045 Spare Manual Call Point Keys (Pack of 10)

Standard Back Box for Manual Call Point



Standard Red surface mounting back box for indoor callpoints.

Product Order Codes

515.001.021 Standard Back box for manual call point

Sounders / Beacons / Relay Bases



Manual Call Points

CONVENTIONAL

Relay Bases



General Information

Functional detector bases use a common moulding which incorporates a double sided circuit board which enables electrical connections to be made on the top and bottom of the functional base. This allows the functional bases to be retrofitted into new and existing universal bases or alternatively the depth and cost of the installed detector can be reduced by using the functional base instead of the universal base.

This feature enables additional sounders to be easily added during commissioning. In addition, changes to the building during its life can be easily adapted to, by retrofitting sounders and relay outputs to existing detection points.

When functional bases are fitted to universal bases, they automatically lock into position. Removal is then achieved using the detector removal tool. This feature ensures that the detector and functional bases are removed separately.

Sounder Base



General Features

- Manufactured to EN54 part 3.
- Integral sounder and detector base.
- Volume and tone adjustable after installation.
- Low Power Synchronisation.
- Do not require use of a standard base (may be installed directly onto a standard base box).

Product Order Codes

577.001.035 601SB

Diode Sounder Base



General Features

- Manufactured to EN54 part 3.
- Integral sounder and detector base.
- Volume and tone adjustable after installation.
- Low Power Synchronisation.
- Do not require use of a standard base (maybe installed directly onto a standard base box).

Product Order Codes

577.001.037 601SBD



Relay Bases

MC600 Functional Relay Base



The 600 Series relay base provides dual relay contacts for signaling external devices on conventional detection systems. Very low operating current even when the relay is energised, enable the relay base to be used without additional power. The relay contacts operate when the detector enters the alarm condition.

General Features

- Dual pole 24Vdc relay contact (60VA).
- Status indicator LED.
- Low power consumption (<20 μ A except start up).
- Latching operation.
- Can be used instead of a standard base.
- Requires diode fitting if used in place of a diode base.

Product Order Codes

568.001.018 MC600 Functional Relay Base

Sounders / Beacons



General Information

A range of sounders to meet a wide variety of alarm applications where loud, penetrating and distinctive warnings must be given to alert people of fire situations.

In addition, multi tone electronic sounders can give a variety of sounds to signal other conditions e.g. "extinguishing gas release imminent," etc.

General Features

- Wide range of both bells and electronic sounders.
- High sound output characteristics.
- Low current consumption.
- Clean lines, modern styling.
- Easy to install, low installation costs.
- Weatherproof units for outdoor use.
- Distinct sounds are available.
- Motorised and Solenoid bells available.
- Wide range of voltages available.



Sounders / Beacons



A flexible alarm sounder for fire and security applications complete with volume control and dil switch to provide 32 tones. Low profile Roshni with deep base offers IP65 protection. All Roshni sounders have synchronized start for self synchronization without third wire.

Product Order Codes

ROSHRDSR Roshni Electronic Sounder

Banshee Warbler



The Banshee Warbler is a fire alarm sounder which is part of the conventional range of sounders and fire alarms supplied by Tyco, who manufacture the leading fire detection equipment brand, FireClass. The 24v Banshee Excel is a fire alarm sounder which has 32 selectable tones and 3 volume settings. The easy push and twist lockable bayonet mounting makes installing fire sounders such as the Banshee fire alarm sounder, a quick and easy process, saving the installer time and money.

Product Order Codes

576.501.060 Banshee Warbler

Solista LX Wall Beacon Red Body White Flash EN54-23 W-2.4 7.5



The Solista LX Wall product takes its slimline design. Available in a red colour and with a shallow base, the Solista LX Wall is suitable for a variety of applications. The Solista LX Wall has a unique lens design that distributes light to achieve the required illumination, whilst using minimum current.

General Features

- Conforms with EN 54-23 (meets the required illumination 0.4lux/m2 over entire room area).
- LED technology for long service life and low current consumption, maximising the number of devices on your alarm circuit.
- Unique optics for light management, with lens design that optimises light dispersal, minimising power wastage.
- Up to 7.5m coverage volume which reduces the number of devices required to cover an area.
- Coverage switch feature • For smaller areas switch down from 7.5m to 5m, reducing power consumption and saving up to 50%.
- Wide input voltage range for flexibility in system design
- Flash rate switch feature • Reduce from 1Hz to 0.5Hz to reduce power consumption by up to 50%.
- Soft start up for reduced current peak at start up, reducing circuit loading
- Locking Bases to prevent easy removal of device.

Product Order Codes

812007FULL-0107x Solista LX wall beacon
812007FULL-0108x Solista LX wall beacon Red body, Red flash
812007FULL-0109x Solista LX wall beacon deep base

Sounders / Beacons

Solista LX Ceiling Beacon White Body White Flash Shallow Base EN54-23 C-3-7.5



The Solista LX Ceiling Beacon has a unique lens design that distributes the light in a cylindrical shape, to achieve the required illumination specified by EN 54-23. Designed for installation at a height of up to 3m and with a discreet appearance, the device is ideal for a variety of applications.

General Features

- Conforms with EN 54-23 (meets the required illumination 0.4lux/m² over entire room area).
- LED technology for long service life and low current consumption, maximising the number of devices on your alarm circuit.
- Unique optics for light management, with lens design that optimises light dispersal, minimising power wastage.
- Up to 7.5m coverage volume which reduces the number of devices required to cover an area.
- Coverage switch feature - For smaller areas switch down from 7.5m to 5m, reducing power consumption by up to 50%.
- Wide input voltage range leads to flexibility in system design
- Flash rate switch feature -Reduce from 1Hz to 0.5Hz setting, reducing power consumption by up to 50%.
- Soft start up means no current peak at start up, thus reducing circuit loading.
- New connection layout creates easier wiring and connection on installation.
- Locking Bases to prevent easy removal of device.

Product Order Codes

812020FULL-0121x

Solista LX ceiling beacon

RoLP LX Wall Beacon Red Body White Flash RoLP Base EN54-23 W-2.4 7.5



The RoLP LX Wall base is ideal for dual use applications where a visual alarm device is required in addition to an audible alarm. Recommended for wall use and requiring just one installation point, the RoLP LX Wall is available to use with any standard RoLP sounder. Ingress protection rating of IP65.

General Features

- Ultra low current consumption.
- RoLP and RoLP Maxi sounder options
- Up to 7.5m coverage volume (switchable to 2.5m)
- 0.5 or 1Hz flash rate

Product Order Codes

8500023FULL-0023	RoLP LX wall beacon
8500025FULL-0025X	RoLP LX wall beacon Red body, Red flash

Symphoni LX Wall



The Symphoni LX Wall is a durable sounder beacon that is certified to EN 54-23. Boasting impressive performance and a durable design, it ensures reliability and energy efficiency. Its high sound output makes it suitable for open areas or where there is higher than normal background noise.

General Features

- Ultra low current consumption.
- Up to 7.5m coverage volume (switchable to 2.5m).
- 0.5 or 1Hz Flash rate.
- Coverage switch to 2.5m.

Product Order Codes

8500043FULL-0043	Symphoni LX Wall
-------------------------	------------------



Symphoni LX WPWall



The Symphoni LX WP Wall device offers a weatherproof alternative to the Symphony LX Wall device. With an ingress protection rating of IP66, it is suited for wet and outdoor environments.

General Features

- Ultra low current consumption.
- Up to 7.5m coverage volume (switchable to 2.5m).
- 0.5 or 1Hz Flash rate.
- Coverage switch to 2.5m.

Product Order Codes

8500048FULL-0048	Symphoni LX WPWall
-------------------------	--------------------

Sounders / Beacons

H201 Electronic Sounder



The H201 is a sounder indicating device for fire indication systems compliant with standard EN 54-3.

It emits an acoustic signal selectable from the 32 options, and has a trimmer for adjusting the volume.

Product Order Codes

576.501.071 H201 Electronic sounder

HS201 Electronic Sounder / Beacon



The HS201 is a sounder-beacon indicating device for fire indication systems compliant with standard EN 54-3.

It emits an acoustic signal selectable from the 32 options, and has a trimmer for adjusting the volume.

Product Order Codes

576.501.072 HS201 Electronic sounder beacon

Vimpex IS28 MK6 Sounder *



The Vimpex IS28 MK6, with its IS and ATEX approvals, is a sounder suitable for use in industrial and explosive atmospheres.

It can be used as a drop-in replacement for the Mark 5. It is approved to the following safety standards:

- Intrinsic Safety Approval: EN 60079-0:2012 + A11:2013, General Requirements
- EN 60079-11:2011, Intrinsic Safety 'i'
- Group II, Category I, Explosive Atmosphere G (Gas) and D (Dust)
- IECEx ITS17.0011X
- ATEX ITS 17ATEX201739X
- Ex ia IIC T5 Ga
- Ex ia IIIC T100degC Da IP66
- ATEX - II IGD Ex ia T5 Ga

Product Order Codes

576.501.053 Vimpex IS28 MK6 Sounder

*This product on its own does not ensure an installation is Intrinsically Safe.

It should be installed using an appropriate barrier, by a suitably trained person and according to guidelines. If you are unsure, please seek advice

Door Release Units

24Vdc White Plastic Door Holder



General Features

- Essential piece of fire protection equipment for most installations.
- Various styles and mounting methods available, including plastic, chrome and brass.
- Integrated release button as standard.

Product Order Codes

2501033 24Vdc White Plastic door Holder

230Vac White Plastic Door Holder



General Features

- Essential piece of fire protection equipment for most installations.
- Various styles and mounting methods available, including plastic, chrome and brass.
- Integrated release button as standard.
- 230Vac low cost units available

Product Order Codes

2501034 230Vac White Plastic door Holder

Remote Indicators



Sounders

CONVENTIONAL

Square Remote Indicator



Designed for fire detection systems requiring local indication of an individual or group of fire detectors in alarm mode, the VRLU indicator utilizes an ultra-bright LED with a wide range of illumination.

The VRLU remote indicator is able to operate with many types of conventional and analogue addressable fire detectors, frequently eliminating the requirement to stock two types of indicator. The VRLU may also be used for other applications requiring a local visual indicator. A purpose-made back box is available as a complete unit.

Product Order Codes

2500226 Square Remote Indicator

601RIL



The 601RIL Remote Indicator is used where a detector LED is not visible i.e., when the detector is mounted in a roof void, lift shaft etc.

General Features

- Dimensions (WxHxD): 86x86x16 mm.
- Operating Temperature: -20 to +70 °C.
- Storage Temperature: -45 to +80 °C.
- Relative Humidity: 95% (non condensing).
- Current consumption Standby: 0 Alarm: 5.43 mA.

Product Order Codes

540.003.006 601RIL

Power Supply Units and Batteries



POWER SUPPLIES Remote indicators

Power Supply Units and Batteries

Power Supply – Battery Charger BAQ & BAW Series



The BAQ is a power supply unit and battery charger to use with appliances that require a regulated voltage of 27,6 V and a maximum current of 5,5 A. Its power output is protected against overload, short-circuit and accidental inversion of the battery polarity.

Features

- Input Voltage: 230 VAC, -15% /+10%, 50/60Hz.,
110VAC -15%/+10% 60Hz for BAW Models
- Output Voltage: 27,6VDC, •1% / +1%.
- Max. battery size (charge):
BAW50T24 = 2 x 12V - 17Ah max.
BAW75T24 = 2 x 12V - 17Ah max.
BAQ140T24 = 2 x 12V - 17Ah max.
- Operating Temperature: -5° to +40°C.
- Dimensions (W x H x D)
BAW50T24 = 129 x 38 x 98 mm
BAW75T24 = 159 x 38 x 97 mm
BAQ140T24 = 205 x 38 x 98 mm
- Weight: 0.5Kg BAW50T24 and BAW75T24, 0.7Kg BAQ140T24

Product Order Codes

- 508.031.752** BAW50T24 Switching power supply / battery charger -
Max. 1,8A @ 27,6VDC
- 508.031.753** BAW75T24 Switching power supply / battery charger -
Max. 2,7A @ 27,6VDC
- 508.031.750** BAQ140T24 Switching power supply / battery charger -
Max. 5,5A @ 27,6VDC

Battery



Product Order Codes

- PS-1221** 12 Volt 2.1 Ampere Battery
- PS-1230** 12 Volt 3 Ampere Battery
- PS-1270** 12 Volt 7 Ampere Battery
- PS-12120** 12 Volt 12 Ampere Battery
- PS-12170** 12 Volt 17 Ampere Battery
- PS-12260** 12 Volt 26 Ampere Battery
- PS-12380** 12 Volt 38 Ampere Battery
- PS-12650** 12 Volt 65 Ampere Battery
- PS-6100** 6 Volt 10 Ampere Battery

Installation Accessories



Installation Accessories

Detector Address Flags (PK100)



The FC460 Series detectors incorporate a feature, which automatically transfers the address flag to the detector base, when the detector is plugged into the base. On removal of the detector the address flag remains on the ceiling, thus ensuring that detectors are not accidentally returned to the wrong detector base following service routines.

Most of the detection panels incorporate additional fail safe software features to ensure that incorrect detector positioning does not compromise the system. Address flags are supplied in packs of 100.

Labels are provided on sheets of 250 in eight colours to enable quick identification between different loops.

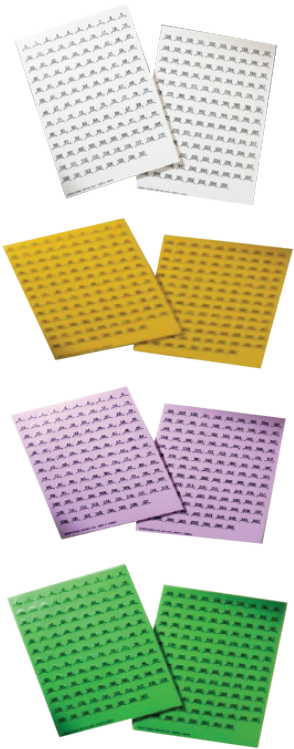
General Features

- Provides clear identification of address.
- Colour coded.
- Flag remains on base

Product Order Codes

516.800.915	Address flags (pack of 100)
516.800.931	Address flag labels Loop A • White
516.800.932	Address flag labels Loop B • Yellow
516.800.933	Address flag labels Loop C • Purple
516.800.934	Address flag labels Loop D • Green
516.800.935	Address flag labels Loop E • Grey
516.800.936	Address flag labels Loop F • Blue
516.800.937	Address flag labels Loop G • Orange
516.800.938	Address flag labels Loop H • Red

Call Point & Ancillary Address Labels



Detectors have a special address flag for carrying the address labels - detailed in the detector section. For other devices or on detectors where zone information is also required a series of address labels are available.

Numbered 1 to 250, the address labels are available in 8 different colours to distinguish between different loops.

In addition small zone labels can be fixed to the address labels.

General Features

- Colour coded for Easy Loop Identification.
- Space for Zonal Label.
- Strong Adhesive Backing.

Product Order Codes

Zone Labels

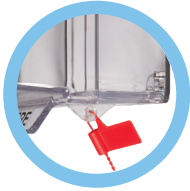
599.047.011	Zone labels - Zones 1 - 16
599.047.012	Zone labels - Zones 17 - 32
599.047.013	Zone labels - Zones 33 - 48
599.047.014	Zone labels - Zones 49 - 64
599.047.015	Zone labels - Zones 65 - 80
599.047.016	Zone labels - Zones 81 - 100
599.047.018	Zone labels - Zones 101 - 120
599.047.019	Zone labels - Zones 121 - 140
599.047.020	Zone labels - Zones 141 - 160
599.047.021	Zone labels - Zones 161 - 180
599.047.022	Zone labels - Zones 181 - 200
599.047.023	Zone labels - Zones 201 - 220
599.047.024	Zone labels - Zones 221 - 240

Address Labels

599.047.030	Address Labels 1 - 250 Loop A • White
599.047.031	Address Labels 1 - 250 Loop B • Yellow
599.047.032	Address Labels 1 - 250 Loop C • Purple
599.047.033	Address Labels 1 - 250 Loop D • Green
599.047.034	Address Labels 1 - 250 Loop E • Light Blue
599.047.035	Address Labels 1 - 250 Loop F • Orange
599.047.036	Address Labels 1 - 250 Loop G • Red
599.047.037	Address Labels 1 - 250 Loop H • Dark Blue

Installation Accessories

Stopper



The UNIVERSAL STOPPER provides protection from malicious or accidental activation of manual callpoints. Available for flush or surface mounted callpoints the UNIVERSAL STOPPER is also available with optional high pitch sounder which is activated when the lid is lifted.

A Break Seal is supplied with all models, to provide extra protection if required.

The UNIVERSAL STOPPER is suitable for all callpoints up to 100 mm square.

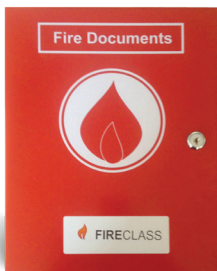
General Features

- Prevents accidental operation of callpoints
- Strong polycarbonate construction
- Break Seal provided (Use is optional)

Product Order Codes

STI-13010FR	UNIVERSAL STOPPER flush mount
STI-13020FR	UNIVERSAL STOPPER flush mount with sounder
STI-13120FR	UNIVERSAL STOPPER surface mount with sounder
STI-13110FR	Indoor or Outdoor UNIVERSAL STOPPER surface mount
515.001.034	STOPPER II SURFACE - RED
515.001.035	Weatherproof STOPPER II Surface mount - Red

A4 Document Box



An A4 sized box ideal for the safe keeping of important fire system documents and log books. Formed from red powder coated steel with a cam lock. The box is branded FireClass with a white FIRE logo. 2 Keys are provided and all units are keyed alike. Dimensions 300 x 235 x 50 mm (HxWxD)

Product Order Codes

557.202.720	Fire Document Box FireClass
--------------------	-----------------------------

Installation Accessories

Testifire Smoke/Heat/CO Tester



Testifire is a 3 in 1 tool which represents the next generation of detector testing enabling smoke, heat and CO testing from one device. Latest technology stimuli production and delivery renders the product suitable for testing complex multi sensors to basic single sensor detectors.

Its advanced design allows for single, sequential or simultaneous stimuli generation. This ensures each type of detector can be functionally tested in an efficient manner.

Testifire eliminates the need for pressurised canisters by using replaceable capsules. It addresses global warming concerns associated with aerosols reducing waste and transport bulk.

General Features

- Provides clear identification of address.
- Colour coded.
- Flag remains on base.

Product Order Codes

517.001.276 Testifire smoke, heat & CO tester with batteries and charger

Testifire Smoke Capsule (Pk6)

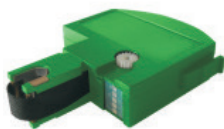


6 x Replacement CO capsules for use with Testifire.

Product Order Codes

517.001.237

Testifire Smoke Capsule (Pk6)



6 x Replacement CO capsules for use with Testifire.

Product Order Codes

517.001.238

Detector Test Equipment

Spare Battery Baton



NiMH Battery Baton for use with Testifire and Solo Cordless Heat Detector Tester.

Product Order Codes

517.001.273 Solo 770 Battery Baton 3000mAh

Spare Baton Charger



Fast Charger for use with Solo Battery Batons.

Product Order Codes

517.001.274 Solo 727 Battery Charger
(for use with Solo 770 only)

Storage Bag



Product Order Codes

517.001.264 Storage Bag

Testifire Smoke/Heat Tester



Includes: 1 x Testifire Smoke & Heat Detector Tester.
1 x Testifire Smoke Capsule.
2 x Solo Battery Batons.
1 x Solo Battery Charger.

Product Order Codes

517.001.278 Testifire smoke & heat tester with
batteries and charger

Solo Smoke Detector Tester



- Non flammable.
- Fast activation.

Product Order Codes

517.001.279 Solo A10s-001 250ml
517.001.280 Solo A10-001 150ml

Solo CO Detector Tester



- Designed for use with Solo Dispenser.
- Genuine, non-flammable CO stimulus.

Product Order Codes

517.001.262 Solo CO detector tester

Solo330 Smoke/CO Aerosol Dispenser



- Lightweight and simple to use.
- Universal design suits wide range of detectors.
- Spring loaded solution for suspended ceilings.
- For use with Solo Smoke and CO Canisters.
- Designed for use with Solo Dispenser.

Product Order Codes

517.001.255

Cordless Heat Detector Tester



Battery powered

- No cables, trailing leads or hanging wires.
- Suits fixed temperature, rate of rise and combination detectors up to 194oF / 90 oC.
- Lightweight and simple to use.
- Universal design suits wide range of detectors.
- Transparent cup for clear view of detector LED.
- Designed for use at height, angles or low level.

Includes: 1 x Solo Heat Detector Tester
 1 x Solo Battery Charger.
 2 x Solo Battery Batons.

Product Order Codes

517.001.277 Solo cordless heat detector tester with batteries and charger

Detector Test Equipment

Scorpion Point Head Unity



The Scorpion Head Unit is permanently installed alongside the smoke detector

- Smoke tailored for functional testing of point type smoke detectors
- Adjustable smoke time to suit requirements of system under test
- Clearing function enables rapid reset and reduces repeat alarms
- Scorp 2011 available for testing aspirating smoke detection systems

Product Order Codes

517.001.270 Scorpion Point Head Unity

Scorpion ASD Head Unit



The Scorpion Head Unit is permanently mounted adjacent to a sampling point on an ASD system pipe – typically at the end of the run. Just one head unit is required for each pipe run – regardless of the number of sampling points

Hard-to-access smoke detectors are common in most buildings, Scorpion has therefore been adopted across a wide range of sites – in particular:

- Universities
- Hospitals
- Retail
- Banking
- Airports
- Warehouses
- Military bases

- Smoke tailored for function testing of ASD Systems
- Adjustable smoke time to suit requirements of system under test
- Suitable for Light Scatter, Particle Counting & Cloud Chamber technologies
- Transport time function allows monitoring of on-going ASD system performance

Product Order Codes

517.001.271 Scorpion ASD Head Unity

Scorpion Portable Controller



The Scorpion 7000 portable controller can be used in conjunction with a SCORP25 Access Point to activate individual Scorpion Head Units connected to Smoke Detectors or ASD systems.

- Activates installed scorpion system
- Connects to SCORP25 Access Point
- Easy to use, store and transport
- Portable – allows use over multiple sites
- Powered via Solo 770 Battery Baton

Product Order Codes

517.001.272 Scorpion Portable Controller

Solo Universal Removal Tool



- Universal Solo design suits wide range of detectors.
- Suitable for use at / from angles.

Product Order Codes

517.001.240

Solo108 Two Section Pole

Two section telescopic pole extends from 1.2 to 2.2 metres



Product Order Codes

517.001.275 Solo 108 Two Section Pole

Telescopic Access Pole



Extends from 1.26m to 4.5m. Optimum strength to weight ratio. Certified non-conductivity. Extension pole adds 1.13m and can also be used as a standalone product.

Product Order Codes

517.001.226 Solo101 Extension pole, 1.13m
517.001.230 Solo100 telescopic extension pole

Adaptor Tube



Adaptor for Solo Access Poles to allow fitting 800RT Detector Removal Tool.

Product Order Codes

517.001.224 SOLO704

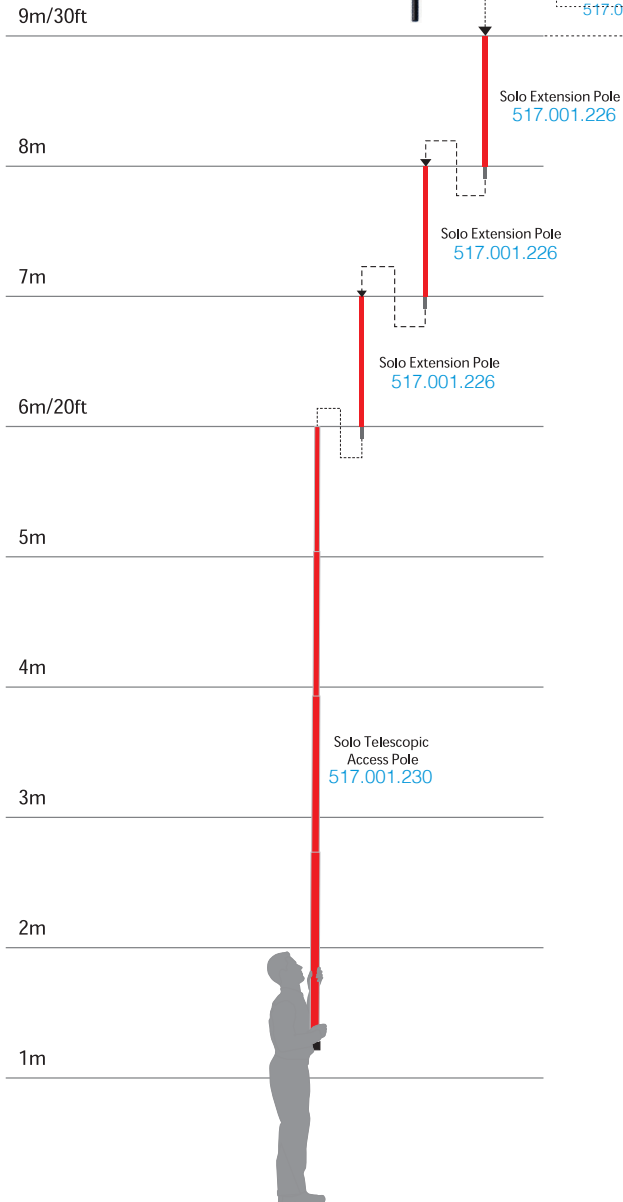
Detector Removal Tool



Compatible with FC400 and FC460 Series detectors.

Product Order Codes

516.800.917 800RT



Solo Poles Access Height

Part No.	Access Height (approx. max.)
517.001.230	6m (20ft)
517.001.230 + 517.001.226 (x 1)	7m (23ft)
517.001.230 + 517.001.226 (x 2)	8m (26.25ft)
517.001.230 + 517.001.226 (x 3)	9m (30ft)



Public Address and Voice Alarm Systems

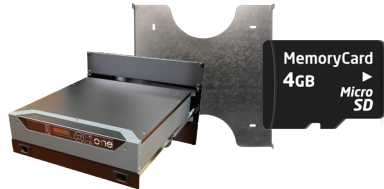


Public Address and Voice Alarm Systems



NEO System

- Compact EN 54-16 certified PA/VA system
- 5 audio inputs
- 8 class D amplifiers with two configurations for 100V/70 V lines
- 8 class D amplifiers of 120 W per channel, or 4 class D amplifiers of 250 W per channel.
- Audio Matrix 7x8 (digital up to 39x2014).



ONE System

- Certified according to the requirements of EN 54-16 and EN54-4
- Wall and rack design
- 2 integrated amplifiers with a combined output of 500W
- 7 local sources
- Auto-setup



PA/VA System Accessories

- Wide range of accessories which can be used for both the NEO and ONE system



NEO System Accessories

- Wide range of accessories including batteries, chargers, power supplies and controllers
- NEO Control Software for total control and supervision of the entire system



ONE System Accessories

- Battery charger
- Rack and wall mounting cabinets



Speakers

- Full range of speakers for different requirements
- Compliant with EN54 part 24
- Indoor and outdoor models

NEO SYSTEM



General Information

The NEO 8060 is a compact EN 54-16 certified PAVA system that ensures a fast, safe and controlled emergency evacuation. NEO represents a cost-effective voice evacuation and public address system due to its cutting-edge features, touch screen and excellent audio quality and flexibility including: 8 class D amplifiers, 5 audio inputs, 7x8 audio matrix (39x1024 digital). With the NEO Configurator software (included), it is possible to configure the equipment remotely and create events to perform actions in the system triggered by conditions of: input level, date & time, UDP command, a GPIO or button from MPS microphone.



General Features

- 5 audio inputs
- 8 class D amplifiers with two configurations for 100V/70 V lines
- 8 class D amplifiers of 120 W per channel, or 4 class D amplifiers of 250 W per channel.
- Audio Matrix 7x8 (digital up to 39x2014).
- 8 pre-amp outputs for external PA amplifiers connection.
- Up to 8 multi-zone microphones, MPS-8Z, or VAP-1 panels connected with CAT5 UTP cable.
- DSP: 7-band input/output parametric equalizer, loudness, sound enhancer, independent volume control per each I/O channel and audio filters.
- Triple Ethernet port: for Digital Audio Cobranet, remote control and supervision, and for expanding the system with NEO Extensions in daisy-chain mode with Flexnet technology (up to 1024 zones).
- 4.3" touch screen with access control.
- 4 GB of internal memory for pre-recorded messages.
- Integrated emergency microphone.
- Control for up to 32 attenuators AT6.
- Integrated frontal loudspeaker for monitoring.
- 22 GPIO ports (8 supervised for integration with fire alarm control panel).

Product Order Code

590.001.001 NEO8060 Public Address and Voice Alarm System

NEO Extension Controllers

NEO4250



The NEO Extension 4250 is an extension controller and a 4x250W amplifier or 2x500W amplifier for the compact EN 54-16 NEO PAVA system.

General Features

- 4 class D amplifiers of 250W or 2 amplifiers of 500W for 100V/70V lines.
- 4 pre-amp outputs for external PA amplifiers connection.
- DSP: 7-band input/output Parametric Equalizer, loudness, sound enhancer, independent volume control per each output channel and audio filters.
- Triple Ethernet port: for Digital Audio Cobranet, remote control and supervision, and for escalating the system with NEO-Extensions in daisy-chain mode with Flexnet technology (up to 1024 zones).
- Control for up to 16 attenuators AT6.
- 6 supervised contact relays for integration with Fire Alarm Control Panel.

Product Order Codes

590.001.002 NEO4250E- Extension Controller + 4 x 250W Amplifier

NEO4500E



The NEO Extension 4500 is an extension controller and a 4x500W amplifier or 2x1000W amplifier for the compact EN 54-16 NEO PAVA system.

General Features

- 4 class D amplifiers of 500W or 2 amplifiers of 1000W for 100V/70V lines.
- 4 pre-amp outputs for external PA amplifiers connection.
- DSP: 7-band input/output Parametric Equalizer, loudness, sound enhancer, independent volume control per each output channel and audio filters.
- Triple Ethernet port: for Digital Audio Cobranet, remote control and supervision, and for escalating the system with NEO-Extensions in daisy-chain mode with Flexnet technology (up to 1024 zones).
- Control for up to 16 attenuators AT6.
- 6 supervised contact relays for integration with Fire Alarm Control Panel.

Product Order Codes

590.001.003 NEO4500E - Extension Controller + 4 x 250W Amplifier

NEO8250



The NEO Extension 8250 is an extension unit for the EN 54-16 NEO PAVA system. This extension unit scales the NEO system with 8 more zones as it includes 8 class D power amplifier channels of 250W at 100V or 70V.

General Features

- 8 class D amplifiers of 250W for 70 or 100V lines
- 8 pre-amp outputs for external PA amplifiers connection.
- DSP: 7-band input/output Parametric Equalizer, loudness, sound enhancer, independent volume control per each output channel and audio filters.
- Triple Ethernet port: for Digital Audio Cobranet, remote control and supervision, and for escalating the system with NEO-Extensions in redundant daisy-chain mode with Flexnet technology (up to 1024 zones).
- Control for up to 32 attenuators AT6.
- Integrated frontal loudspeaker for monitoring.
- 12 supervised contact relays for integration with Fire Alarm Control Panel.

Product Order Codes

590.001.004

NEO8250E- Extension Controller + 8 x 250W Amplifier

NEO4500LE



The NEO Extension 4500LE is an extension unit for the EN 54-16 NEO PAVA system. This extension unit includes 4x500W class D power amplifier channels or 2x100W class D power amplifier channels at 100V/70V lines.

General Features

- 4 class D amplifiers of 500W at 4 Ohms.
- 4 pre-amp outputs for external PA amplifiers connection.
- DSP: 7-band input/output Parametric Equalizer, loudness, sound enhancer, independent volume control per each output channel and audio filters.
- Triple Ethernet port: for Digital Audio Cobranet, remote control and supervision, and for escalating the system with NEO-Extensions in daisy-chain mode with Flexnet technology (up to 1024 zones).
- Control for up to 16 attenuators AT6.
- 6 supervised contact relays for integration with Fire Alarm Control Panel.

Product Order Codes

590.001.005

NEO4500LE - Extension Controller + 4 x 500W @ 4Ω Amplifier

NEO System Accessories

ZES22 – Audio Over Ethernet Converter



The ZES-22 digital audio processor is a Digital Audio Matrix that offers advanced features for any type of audio installation. It has 4 flexible audio ports that can be configured as inputs or outputs. Audio input comes via Ethernet through the COBRANET® protocol and includes a redundant Ethernet interface, offering the possibility to design distributed audio systems. This digital audio matrix allows optical fibre adapters for sending and receiving data through large distances.

General Features

- Local audio Matrix of 2x2 I/O (optional configuration in factory)
- Audio transfer by COBRANET® protocol 48Khz/24bits
- High performance DSP
- Analogical gain for each channel in order to improve the signal/noise ratio
- Remote and local configuration
- Remote and local supervision
- Graphic interface for remote configuration. Easy operation (GUI)
- Phantom power supply for microphones.

Product Order Codes

590.001.006 ZES22

MS40 – Battery Charger



Battery charger for voice evacuation systems, EN54-4 compliant. Designed for charging lead-acid batteries and at the same time, it provides power supply for auxiliary applications. Includes 2 charger outputs with a maximum power of 960W. It supports 1 NEO8060 with 2 x 45 Ah 12V Batteries (batteries not included).

Product Order Codes

590.001.007 MS40

MS150 – Battery Charger



Battery charger for voice evacuation systems, EN54-4 compliant. Designed for charging lead-acid batteries and at the same time, it provides power supply for auxiliary applications. Includes 6 charger outputs with a maximum power of 3600W. It supports up to 3 NEO Extension units with 2 x 120 Ah 12V Batteries (batteries not included).

Product Order Codes

590.001.008 MS150

BTL12-45 - 45Ah 12V BATTERY



45Ah 12V battery for use with 960W battery charger slats on 24V 6A M40.

Product Order Codes

590.001.009 BTL12-45 - 45Ah 12V BATTERY

BTL12-120 - 120Ah 12V BATTERY



120Ah 12V battery for use with 3600W battery charger slats on 24V 12A MS 150.

Product Order Codes

590.001.010 BTL12-120 - 120Ah 12V BATTERY

VCC-64PSK – Communication and Power Supply Adapter, RJ-45



The VCC-64 PSK communication and power adapter allows VCC-64 devices to be installed in the system, using a single CAT5 cable for the entire device bus.

General Features

- It allows to connect up to 10 units together.
- Only it is necessary one CAT 5 cable for the whole devices.

Product Order Codes

590.001.012 VCC-64PSK

NEO System Accessories

VCC64 – Channel and Volume Controller



The VCC-64 allows up to 64 programmable channels and volume control (0-9). Usually installed in local zones and connected via bus to the system, it offers source selection, volume control and lock function.

General Features

- Source selection (1-64)
- Volume setting for the zone (0-9) – 10 steps per change
- Automatic lock function
- It shows the identifier of the music source routed to the zone
- It shows the volume level assigned to the zone
- Lock activated indicator
- Connection of devices by bus mode

Product Order Codes

590.001.013 VCC-64

AT-6.0 – Constant Impedance Rotary Attenuator With Priority



Constant impedance attenuator with 5 6dB attenuation stages

General Features

- Maximum power 12W@100V and 6W@70V,
- Control input for emergency system
- For installation in universal built-in box.

Product Order Codes

590.001.014 AT-6

AT-25 – Constant Impedance Rotary Attenuator With Priority



Constant impedance attenuator with 5 6dB attenuation stages

General Features

- Maximum power 50W@100V and 25W@70V
- Control input for emergency system
- For installation in surface-mount box or in panel.

Product Order Codes

590.001.015 AT-25

AT-150 – Constant Impedance Rotary Attenuator With Priority



Constant impedance attenuator with 5 6dB attenuation stages

General Features

- Maximum power 150W @100V.
- Control input for emergency system
- For installation in universal built-in box.

Product Order Codes

590.001.016 AT-150

NEOCTRLSW – NEO Control Software



This software allows total control and supervision of the entire system through Ethernet network, an easy and intuitive installation and with no configuration required. It allows a centralized control of the system, volume control, source routing, pre-recorded messages broadcasting, management of emergency functions and system profiles. It allows setting installation floor plans as GUI interface. Single-user license.

General Features

- Central and secure control of the NEO system
- Routing of quality audio
- Easy to install and configure
- Volume control
- Total system supervision (failure, evac mode, etc) by zones
- Allows to add installation drawing plans
- Synchronised with the NEO system
- Without the need to configure databases
- Exclusive for NEO systems (NEO 8060 and NEO Extensions units)
- One NEO system can accept up to 5 connections from NEO Control

Product Order Codes

590.005.001 NEOCTRLSW

RCD-21R Player CD/USB



The RCD-21R is an all-in-one multi-source audio player that includes CD player, FM/AM radio and USB interface. It is cost effective equipment that can provide professional level audio performance

General Features

- CD player, FM / AM radio and USB Interface
- Independent CD / USB and FM / AM outputs
- Supports CD, CDR, CDRW, MP3 and WMA
- Supports USB 1.1 and USB 2.0

Product Order Codes

590.001.017 – RCD-21R Player CD/USB

ONE System Accessories

ONE500 – Compact Public Address and Voice Alarm System



General Information

The ONE PAVA system is certified according to the requirements of EN 54-16 and EN54-4, ensuring a safe and controlled emergency evacuation. Its high performance, versatility and audio quality make it a powerful and affordable music and voice distribution system for all types of installations.

It includes 2 amplification channels with 200 Wrms (500 W music/voice as per EN60065) to distribute between 6 zones. Line supervision without return cable (EOL devices not included). DSP processor. 6 control zones. Possibility of wall installation, rack and desk. Integrated battery charger and housing EN 54-4 certified (OPTIONAL: To be activated with used card). Integration interface with fire alarm panel. EVAC and ALERT pre recorded messages. All integrated, no need for external applications. 4 pre AMP outputs. 3 audio inputs with priority and mixed audio input. 6 override outputs.



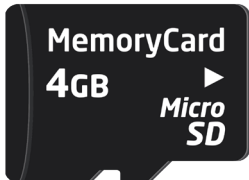
General Features

- Wall and rack design
- 2 integrated amplifiers with a combined output of 500W
- 7 local sources
- Auto-setup
- Manual configuration from LCD screen
- USB backup and restore

Product Order Code

590.002.001 ONE500

ONE-BC1 – USD Card For Activation of Battery Charger



Battery charger update and activation card EN54-4 for ONE-500. Once activated, the card becomes a key for the charger to work permanently.

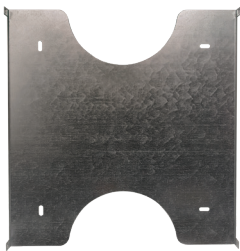
General Features

- Activates EN 54-4 certified function, Emergency Power System (EPS).
- Permanent installation with access control in ONE-500 unit.

Product Order Codes

590.002.002 ONE-BC1

ONE-WMA – Wall-mounting Kit for ONE-500



Wall mounting bracket for ONE-500 made of high strength galvanized steel. Quick installation, assembly and disassembly of the ONE unit. Includes accessories and installation hardware.

Product Order Codes

590.002.003 ONE-WMA

ONERMA – Rack-mounting Kit for 19" Rack Cabinet



Installation support in 3U 19" rack for removable ONE-500. Allows quick installation, assembly and disassembly of the ONE unit, includes accessories and installation hardware.

General Features

- Removable mounting up to 550 mm.
- 19" 3U rack (including ONE-500 unit).
- Locking latches / handles.
- For 19" racks from 500 to 900 mm deep.

Product Order Codes

590.002.002 ONERMA
590.002.004

ONE System Accessories

ONERMA2 – Rack Fixed Mounting Kit for 19” Rack Cabinet.



Installation support in 2U 19” rack for ONE-500 fixed.

General Features

- Fixed mounting for 19” rack.
- 19” 2U rack (including ONE-500 unit).

Product Order Codes

590.002.005 ONERMA2

10x ONE Network Card



The ONE500-Loop is an expansion card that allows users to connect up to 10x ONE500 with a total of 60 zones. The expansion card ONE500-LOOP has a redundant communication which allows the systems to be supervised and managed according to EN54 standards.

General Features

- Expandable up to 10xONE-500
- Expandable up to 60 Zones
- Redundant Loop communication
- Supervised/Managed System
- Easy to install

Product Order Codes

590.002.008 10x ONE Network Card

PAVA System Accessories

The accessories listed below can be used with both the NEO system and the ONE system.

A1 – Paging Microphone



The A-1 is a high performance desktop microphone for professional Public Address installations. It has lighting indicators in order to show active state, line busy or permission to speak granted.

Thanks to its internal microcontroller, it is able to work under different systems and with different operational modes: on/off button, push to talk button, RS-485 communication or TTL through 2 wires, advise-tone to initiate/cut communication and TTL control level selection.

General Features

- High performances dynamic capsule
- Local power supply.
- Audio gain setting.
- Configurable contact relay for auxiliary system.
- Busy line and conceded-word indicators.
- Lighting indicator placed in the goose-neck.
- Suitable for EN 60849 PAVA systems like SONORA.

Product Order Codes

590.010.001 A1

MPS-8Z – Multi-zone Paging Microphone



The MPS series of paging stations is designed to provide the system with high-quality public address and performance microphones. The MPS-8Z microphone desk allows the user to give live voice announcements and messages to up to 64 public address zones of a NEO system.

General Features

- 8-zone programmable buttons.
- System event activator.
- Recall function.
- Auto-lock function.
- LED indications for zone selection
- LED indicators of the system's state (EMG, FLT or LINK).
- LED Indicators of busy and conceded word.
- Power directly from system thorough the UTP cable.
- High performance durable microphone capsule.

Product Order Codes

590.010.002 MPS-8Z

PAVA System Accessories

MPS-8K – Expansion Unit



Expansion unit for the paging microphone MPS-8Z. It adds 8 extra programmable buttons that can be assigned to different zones by the NEO configurator software. It includes transparent cover for zone's names indication. Up to 8 MPS-8K units per MPS-8Z microphone.

General Features

- 8 zones programmable buttons.
- Can connect up to 7 units to an MPS-8Z microphone.

Operating Conditions -5 °C to +45 °C / 23 °F to 113 °F
5% to 95% relative humidity (no condensation)

Colour Grey RAL 7016 and Black RAL 9005

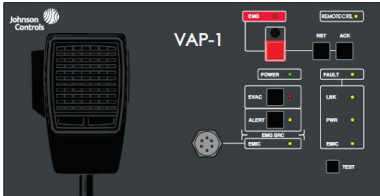
Dimensions (W x H x D) 86 x 75 x 200 mm / 3.4~ x 2.9~ x 7.9~

Accessories Fixation elements, MPS-8Z connection and label for button identification

Product Order Codes

590.010.003 MPS-8K

VAP1 – Voice Alarm Panel



The Voice Alarm Panel is an external remote control that incorporates an emergency microphone and provides direct access to voice evacuation functionalities of the NEO system. It allows the user to give multiple live voice evacuation notices and to issue alert and evacuation messages to up to 56 selection memories of PA zones in a NEO system.

General Features

- Up to 56 group memories of up to 8 zones per memory (448 zones of the system).
- Prior notice tone
- Volume adjustment
- Power supply indicator
- Emergency condition general indicator
- Fault condition general indicator
- Link with system fault indicator
- Power supply fault indicator
- Emergency microphone fault indicator
- Remote control indicator

Product Order Codes

590.010.004 VAP1

VAP-8K – Expansion Unit



Expansion unit for the fireman's panel, VAP-1. It adds 8 extra programmable buttons that can be assigned to different zones by the NEO Configurator software. It includes transparent cover for zone's names indication. Up to 7 VAP-8K units per VAP-1 panel.

General Features

- 8 software programmable buttons
- Up to 7 can be connected together
- Busy zone indicators
- Metallic chassis that provides stability and protection against damage.
- Local power supply

Product Order Codes

590.010.005 VAP-8K

VAP-1EC – Blank Block for Voice Alarm Panel



Using VAP in its 4U and 6U racks. Below ONE500 when installed on the wall.

General Features

- Using VAP-1 in its 4U and 6U racks.
- Below ONE500 when installed on the wall.

Product Order Codes

590.010.006 VAP-1EC

RACK4ALT – 4U Wall-Mounted Rack Cabinet



It includes a glass door, perfect for the Voice Alarm Panel, VAP-1, and its expansion units, VAP-8K. It includes all blank panels and accessories required.

General Features

- Full structure with 19" rack guides and adjustable front panel in 6 depth levels.
- Access door made of metal and glass, with lock and key. 180° opening style.
- Wiring hole on top or bottom panel.
- Fully assembled.

Product Order Codes

590.010.007 RACK4ALT

PAVA System Accessories

RACK6ALT – 6U Wall-Mounted Rack Cabinet



It includes a glass door, perfect for the Voice Alarm Panel, VAP-1, and its expansion units, VAP-8K. It includes all blank panels and accessories required.

General Features

- Full structure with 19" rack guides and adjustable front panel in 6 depth levels.
- Access door made of metal and glass, with lock and key. 180° opening style.
- Wiring hole on top or bottom panel.
- Fully assembled.

Product Order Codes

590.010.008 RACK6ALT

TFL2 – End Of Line Device



The end of line device allows the system to obtain greater precision in the supervision of loudspeaker lines. End of line devices improve the detection of problems in open-circuit loudspeaker lines, but they cannot detect the place where the failure has occurred.

General Features

- Supervision of 70V or 100V speaker lines.
- Easy connection and installation, surface mountable.
- Several devices can be connected to the same speaker line.
- Small dimensions.
- Low consumption.
- Higher accuracy on impedance measurements.
- Supervision until the last speaker, even in low load speaker lines.
- No return cables.
- 400R/200R configurable load for 19kHz tone.
- Compatible with ONE and NEO systems with the latest firmware version.

Product Order Codes

590.010.009 TFL2

12U Rack Cabinet



Rack-Alt Series cabinets are available in 19" formats in order to meet any need in voice and data installations. These are multipurpose racks since they can be used for audio equipment, patch panels and electric equipment installations.

General Features

- Steel frames for structure assembly.
- Wiring entrance in top and base
- Steel supports for profile mounting and shifting
- 4 19" moveable profiles.
- Accessible side panels
- Top with side, front and rear vent slots.
- 4mm grey Parsol glass front door in a metallic frame
- with lock and vent slots.
- Back door with lock
- Levelling feet or wheels
- Capacity up to 400 kg

Product Order Codes

590.011.001 RACK-12ALT – 12U Rack Cabinet

24U Rack Cabinet



Rack-Alt Series cabinets are available in 19" formats in order to meet any need in voice and data installations. These are multipurpose racks since they can be used for audio equipment, patch panels and electric equipment installations. RACK-24ALT model has a depth of 800 mm and a capacity of 24U of 19" each

General Features

- Steel frames for structure assembly
- Wiring entrance in top and base
- Steel supports for profile mounting and shifting
- Four 19" moveable profiles
- Accessible side panels
- Top with side, front and rear vent slots
- 4mm grey parsol glass front door in a metallic frame with lock and vent slots
- Back door with lock
- Levelling feet or wheels
- Capacity up to 800 kg (static)

Product Order Codes

590.011.002 RACK-24ALT – 24U Rack Cabinet

42U Rack Cabinet



Rack-Alt Series cabinets are available in 19" formats in order to meet any need in voice and data installations. These are multipurpose racks since they can be used for audio equipment, patch panels and electric equipment installations. RACK-42ALT model has a depth of 800 mm and a capacity of 42U of 19" each.

General Features

- Steel frames for structure assembly
- Wiring entrance in top and base
- Steel supports for profile mounting and shifting
- Four 19" moveable profiles
- Accessible side panels
- Top with side, front and rear vent slots
- 4mm grey parsol glass front door in a metallic frame with lock and vent slots
- Back door with lock
- Levelling feet or wheels
- Capacity up to 400 kg (static)

Product Order Codes

590.011.003 RACK-42ALT – 42U Rack Cabinet

PAVA System Accessories

Racking, Wiring and Mount of 12U, 24U & 42U

Racking, wiring and mounting of 12U, 24U & 42U Rack in factory includes:

- Black blind panel 1U for 19" rack, DIN rail 200 cm, treated European pallet, caged nuts, washers, screws and auxiliary material, assembly labor, labeling, packing and palletizing.

- For each NEO and NEO Extension equipment: FTP RJ45 CAT6A 100 cm hose, UTP RJ45 CAT5E 50 cm hose, 19" rack bracket, IEC black hose to Schuko 3x0.75mm, 4xSchuko 19" rack bracket, cage nuts, washers, screws and auxiliary material.

- For each battery charger: Emergency power wiring for you NEO series equipment, IEC black hose to Schuko 3x0.75mm, emergency power monitor signals hose, 12V battery wiring unit, 19" rack battery tray, 1U black blind panel for 19" rack, 4xSchuko 19" rack strip, cage nuts, washers, screws and auxiliary material.

- For each ZES22: FTP RJ45 CAT6A 100 cm hose, 19" rack bracket, cage nuts, washers, screws and auxiliary material

Product Order Codes

590.011.001	RACK-12ALT – 12U Rack Cabinet
590.011.004	Racking, Wiring and Mount of 12U
590.011.005	Racking, Wiring and Mount of 24U
590.011.006	Racking, Wiring and Mount of 42U

Day Service of Commi & Config. REMOTELY (8 hr)

Subject to conditions: system devices must be powered, connected by network and well assembled; Loudspeaker lines must be stamped and verified

Product Order Codes

590.011.007	Day Service of Commi & Config. REMOTELY (8 hr)
--------------------	--

Factory Testing and Commissioning

Product Order Codes

590.011.008	Factory Testing and Commissioning
--------------------	-----------------------------------

JCI Speakers

Johnson Controls are pleased to announce that the following speakers will soon be available as part of our PAVA range and will be branded with the JCI logo.

CH32TN – 3” Ceiling Speaker



The CH-32TNN ceiling loudspeaker is designed for flush mounting in suspended ceilings and provides an even sound distribution. The loudspeaker has a built-in protection to ensure that, in the event of a fire, damage to the loudspeaker does not result in failure of the loudspeaker circuit. In this way, system integrity is maintained and ensures that loudspeakers in other areas that are connected to the same circuit can still be used to inform people of the situation.

General Features

- The loudspeaker can be easily installed by using the mounting spring attached
- Fire dome is mounted in the speaker using the sliding brackets and wing nuts
- Equipped with thermal fuse and heat-resistant, high-temperature wiring
- The loudspeaker is available with or without capacitor
- Fire dome (590.003.002) isn't included
- Compliant with EN54 part 24

Product Order Codes

590.003.001 CH32TN

Johnson Controls Speakers

CH42TNN – 5” Ceiling Speaker*



The CH-42TNN ceiling loudspeaker is designed for flush mounting in suspended ceilings and provides an even sound distribution. The loudspeaker has a built-in protection to ensure that, in the event of a fire, damage to the loudspeaker does not result in failure of the loudspeaker circuit. In this way, system integrity is maintained and ensures that loudspeakers in other areas that are connected to the same circuit can still be used to inform people of the situation.

General Features

- The loudspeaker can be easily installed by using the mounting spring attached
- Fire dome is mounted in the speaker using the sliding brackets and wing nuts
- Equipped with thermal fuse and heat-resistant, high-temperature wiring
- The loudspeaker is available with or without capacitor
- Fire dome (590.003.004) isn't included
- Compliant with EN54 part 24

Product Order Codes

590.003.003 CH42TNN

DS60TN1 – 5” Wall Mount Speaker*



The DS-60TN1 is a high-performance anti-vandal 6W voice alarm cabinet loudspeaker. It provides a broad frequency response range, low distortion and high sound pressure level for accurate and intelligible broadcast of evacuation messages and high quality sound reproduction.

The unit is ideal for sound distribution in various types of commercial buildings. Its low-profile, white color design blends easily with most interiors in locations such as hotels, conference rooms, cinemas, factories and exhibitions.

General Features

- Intelligible voice and superior sound reproduction
- Robust metal enclosure
- Blends with all indoor decoration
- Simple power setting
- Easy installation
- Available with or without capacitor (Part number without “C”)
- Compliant with EN54 part 24

Product Order Codes

590.003.005 DS60TN1

PCP20TN – 5” IP65 Anti-Vandal Cylindrical Projector*



The PCP-20TN is a 20W high-performance unidirectional anti-vandal projection loudspeaker. It offers high quality sound reproduction and intelligible broadcast of voice evacuation messages thanks to its high sound pressure level, low distortion and a broad frequency response range.

The unit's high IP rating ensures reliable operation over wide temperature and humidity ranges making it ideal for both indoor and outdoor applications.

General Features

- Weatherproof to allow outdoor use
- Excellent sound reproduction
- Intelligible voice broadcasting
- Compliant with EN54 part 24

Product Order Codes

590.003.006 PCP20TN

PCM20TN1 – 5” IP65 Anti-Vandal Cylindrical Projector *



The PCM-20TN1 is a 20W high-performance bidirectional projection anti-vandal loudspeaker. The unit offers high quality sound reproduction and intelligible broadcast of voice evacuation messages thanks to its high sound pressure level, low distortion and a broad frequency response range. Its high IP rating ensures reliable operations over wide temperature and humidity ranges making it ideal for both indoor and outdoor applications.

General Features

- Weatherproof to allow outdoor use
- Excellent sound reproduction
- Intelligible voice broadcasting
- Complies with EN54-24 standard

Product Order Codes

590.003.007 PCM20TN1

Johnson Controls Speakers

PS30TN IP66 HORN LOUDSPEAKER



PS-30TN is a high performance voice alarm horn loudspeaker certified according to EN54-24 standards. Its broad frequency range, low distortion, and high volume ensure the delivery of intelligible voice and high quality sound. It is made of ABS and, for increased fire protection, the loudspeaker is equipped with built in ceramic connector blocks and a thermal fuse. The power taps are 15W / 10W / 5W @100V or low impedance 8 Ohms.

With its wide operating range of temperature and humidity, it is suitable for use in extreme outdoor applications. The stylish low-profile and light grey colour design allows it to blend easily with the interior of most applications such as train stations, harbors, factories, campuses and stadiums

General Features

- EN54-24 certified: 0359-CPR-00456
- Intelligible voice and superior sound reproduction
- Ergonomic, low profile and stylish design, blends easily into any outdoor application
- High-strength UV resistive UL94V0 ABS housing
- Easily mounted on the wall or column with the U-type bracket provided
- High sensitivity: 105dB (1W, 1m)

Product Order Codes

590.004.006 PS30TN IP66 HORN LOUDSPEAKER

CI825TN IP66 8x2,5



The CI-825TN is an EN 54-24 certified, 40W column loudspeaker. It provides a broad frequency response range, low distortion and high volume for accurate, intelligible broadcast of evacuation messages and high-quality sound reproduction.

It is suitable for both indoor and outdoor thanks to its IP66 protection, which makes it perfect for most types of environments.

General Features

- EN 54-24 certified
- Intelligible voice and excellent sound reproduction
- Robust aluminium housing
- Includes universal swivel bracket for easy angle adjustment
- Able to be switched between 100V and 70V
- Adaptable to extreme environments
- IP66 protection

Product Order Codes

590.004.007 CI825TN IP66 8x2,5

CI225TN IP66 2x4



The CI-225TN is an EN 54-24 certified 20W column loudspeaker. It provides a broad frequency response range, low distortion and high volumes for accurate and intelligible broadcast of evacuation messages and high-quality sound reproduction.

It is suitable for both indoor and outdoor thanks to its IP 66 protection, which makes it ideal for most types of environments.

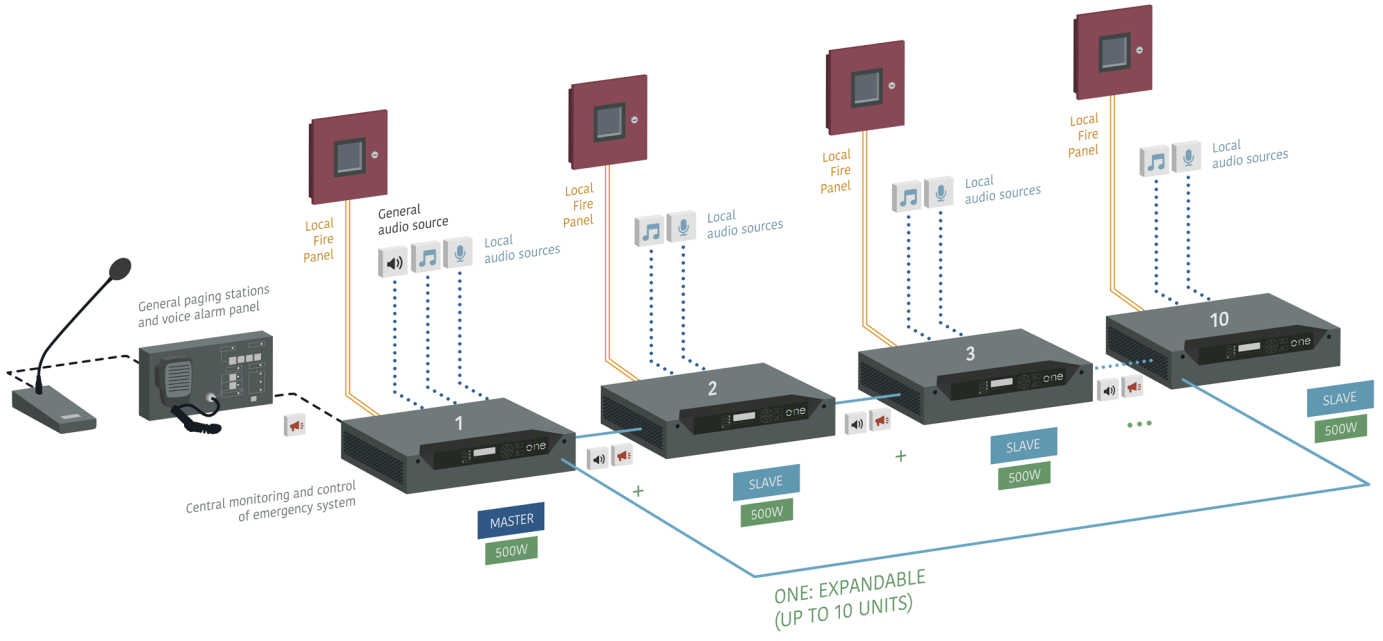
General Features

- EN 54-24 certified
- Intelligible voice and excellent sound reproduction
- Robust aluminium housing
- Includes universal swivel bracket for easy angle adjustment
- Able to be switched between 100V and 70V
- Designed for use in extreme environments
- IP66 protection

Product Order Codes

590.004.008 CI225TN IP66 2x4

ONE EXPANDABLE SYSTEM EN 54 -16 EN 54 -4



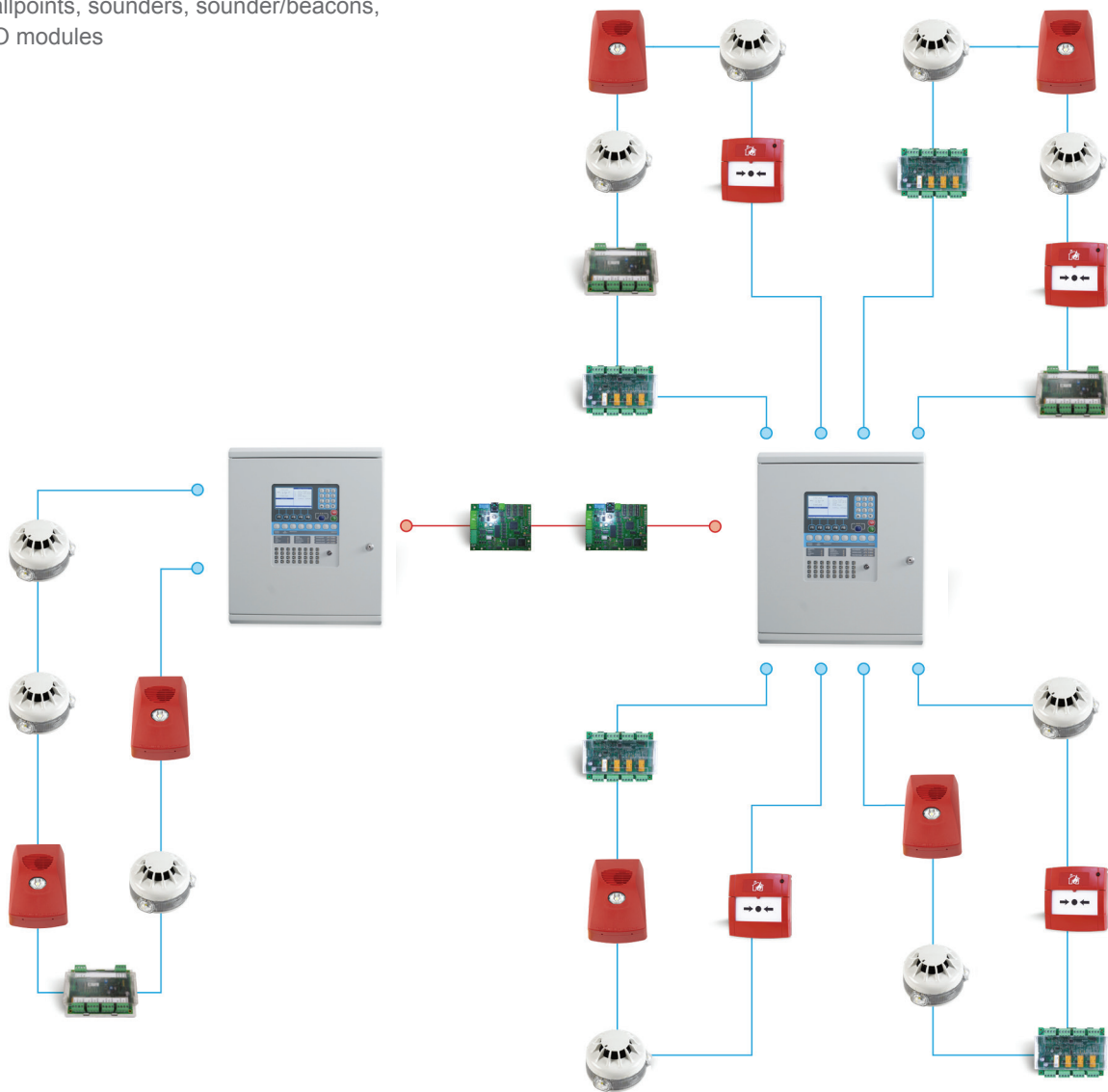
----- LDA ACS1® paging station bus (UTP cable)	— Speakers line 100V Analogue audio	— Fire alarm local zones and Fire alarm general / reset
--	----------------------	----------------------	---

Connection for up to 10 equipment with double communication link. Up to 60 zones and speaker lines. EVAC and ALERT local messages + Autonomous emergency power supply for each ONE unit.

- 🔊 General audio source
- 🎵 Local audio source (background music)
- 🎤 Local audio source with priority
- 📢 General paging stations and voice alarm panel

FireClass EN54-13 Approved Addressable System

FireClass addressable system composed by a 1 loop panel and a 4 loop panel in a network. In the loops there are detectors, callpoints, sounders, sounder/beacons, callpoints, I/O modules



Product images shown are sample images only and do not represent the complete product portfolio.



For more information about FireClass fire detection technology visit: www.fireclass.com

About Johnson Controls

At Johnson Controls, we transform the environments where people live, work, learn and play. From optimizing building performance to improving safety and enhancing comfort, we drive the outcomes that matter most. We deliver our promise in industries such as healthcare, education, data centers and manufacturing. With a global team of 100,000 experts in more than 150 countries and over 135 years of innovation, we are the power behind our customers' mission. Our leading portfolio of building technology and solutions includes some of the most trusted names in the industry, such as Tyco®, YORK®, Metasys®, Ruskin®, Titus®, Frick®, Penn®, Sabroe®, Simplex®, Ansul® and Grinnell®.

For more information, visit www.johnsoncontrols.com or follow [@johnsoncontrols](https://twitter.com/johnsoncontrols) on Twitter.